

JUNG Visu Pro Smart Assistant

Content:

1 APPLICATION RANGE.....	3
2 TECHNICAL REQUIREMENTS.....	3
2.1 HARDWARE.....	3
2.2 OPERATING SYSTEMS.....	3
2.3 RECOMMENDED BROWSER.....	4
2.4 CLIENT/BROWSER SETTINGS.....	4
3 GENERAL INSTRUCTIONS.....	5
3.1 INSTALLATION/UNINSTALLATION.....	5
3.2 OPERATION.....	6
3.3 REDO/UNDO.....	6
4 FIRST RUN.....	7
4.1 TERMS OF LICENSE.....	7
4.2 REGISTRATION/SOFTWARE-ACTIVATION.....	7
4.2.1 Enter the Activation Code.....	8
5 FUNCTIONS.....	8
5.1 CREATE PROJECT.....	8
5.2 EDIT PROJECT PROPERTIES.....	8
5.3 EXPORT PROJECT.....	9
5.4 IMPORT PROJECT.....	10
6 EDITING PROJECT.....	10
6.1 EDITING BAR.....	10
6.2 BUILDING STRUCTURE.....	11
6.2.1 Note Regarding the Procedure.....	11
6.2.2 Add Buildings.....	12
6.2.3 Add Floors.....	14
6.2.4 Add Rooms.....	15
6.2.5 Add Control Groups.....	16
6.2.6 Add Controls.....	17
6.3 CONNECTIONS.....	24
6.3.1 Filters and Symbolic Connections.....	25
6.3.2 Group Addresses.....	27
6.3.3 Export Group Addresses / Symbolic Connections.....	28
6.4 WEEKLY TIME SWITCHES.....	29
6.5 STORE SCENES.....	31
6.6 CONSUMPTION CHART.....	32
6.7 PAGE SETTINGS.....	34
6.7.1 Headline.....	34
6.7.2 Footer.....	34
6.7.3 Functions.....	35
6.7.4 Favourites.....	36
6.8 PROJECT SETTINGS.....	38
6.8.1 Font.....	38

6.8.2 Placeholder.....	38
6.8.3 Default Connections.....	38
6.9 WEATHER.....	39
6.10 CAMERA / WEBSITES.....	41
6.11 STATUS PAGES.....	42
6.12 CENTRAL SITES.....	43
6.13 TEMPLATES.....	44
6.13.1 Show/Hide Template.....	44
6.13.2 Insert Elements from the Template.....	45
7 OPTIONS.....	45
7.1 USER ADMINISTRATION.....	45
7.2 PROGRAM INFORMATION.....	46
7.3 HELP.....	47
7.4 REGISTRATION.....	47
7.5 LANGUAGE.....	47

Address

ALBRECHT JUNG GMBH & CO. KG

Volmestraße 1
D-58579 Schalksmühle

Phone +49 (0) 23 55/80 60
Fax +49 (0) 23 55/80 61 89

 mail.info@jung.de

Copyright ©2017 ALBRECHT JUNG GMBH & CO. KG

All rights reserved.

Registered Trademarks

Microsoft®, DirectX®, .NET Framework®, Windows®, Windows NT® are registered trademarks of Microsoft Corporation.

All trademarks and registered trademarks are the property of their respective owners.

1 Application Range

The JUNG Visu Pro Smart Assistant is an add-on to the JUNG Visu Pro Visualization. The Visu Pro Visualization editor allows an individual custom-designed visualization. This is a special strength of the Visu Pro System. Often, the visualizations have a common pattern differing only in details, such as multistory buildings or housing areas with equal floor plans. JUNG GUI (Graphical User Interface) is also a common pattern with standardized control elements.

If there is a common pattern, the Visu Pro Smart Assistant may simplify the project planning of the visualization project by configuring pattern variants. That way, the visualization is accessible to a wider audience and realizes significant cost savings.

After registration of the Visu Pro Smart Assistant, entries can be generated automatically out of a Visu Pro project for the Visu Pro Visualization and ETS Planning Tool of KNX Association.

2 Technical Requirements

2.1 Hardware

Processor	Pentium IV or equal, running at 2,0 GHz
Main memory	1024 MB
Free disk space (essentially depends on the configured archives)	40 GB
Screen resolution	1024 x 768 Pixel
Colors	Color depth min. 16 bit per pixel

2.2 Operating Systems

WINDOWS SERVER 2008 / 2012 / 2016	NO
WINDOWS 10 Pro, 32 + 64-bit	YES
WINDOWS 8 and 8.1 Pro, 32 + 64-bit	YES
WINDOWS 7 Home, Professional and Ultimate, 32 + 64-bit	YES
WINDOWS XP	NO

Note: .NET 3.5 must be activated/installed. (Not activated by default since Windows 8).

2.3 Recommended Browser

- Firefox
- Safari

Always the most current version.

2.4 Client/Browser Settings

- Javascript must be activated.
- Cookies must be enabled.
- Whether the use of multiple browser-tabs works or not, depends on the browser. In fact, it does not work with most browsers.
- Whether the use of privacy/incognito mode works or not, depends on the browser as well.

3 General Instructions

3.1 Installation/Uninstallation

If not all the required components of IIS are installed or enabled, an error message may possibly be generated. For example:

Error Summary

HTTP Error 500.19 - Internal Server Error

The requested page cannot be accessed because the related configuration data for the page is invalid.

Detailed Error Information

Module	IIS Web Core	Requested URL	[REDACTED]
Notification	BeginRequest	Physical Path	[REDACTED]
Handler	Not yet determined	Logon Method	Not yet determined
Error Code	0x80070021	Logon User	Not yet determined

Config Error: This configuration section cannot be used at this path. This happens when the section is locked at a parent level. Locking is either by default (overrideModeDefault="Deny"), or set explicitly by a location tag with overrideMode="Deny" or the legacy allowOverride="false".

Config File: \\? [REDACTED]

Config Source

```
216: <validation validateIntegratedModeConfiguration="false"/>
217: <handlers>
218: <add name="ScriptHandlerFactory"
```

Links and More Information

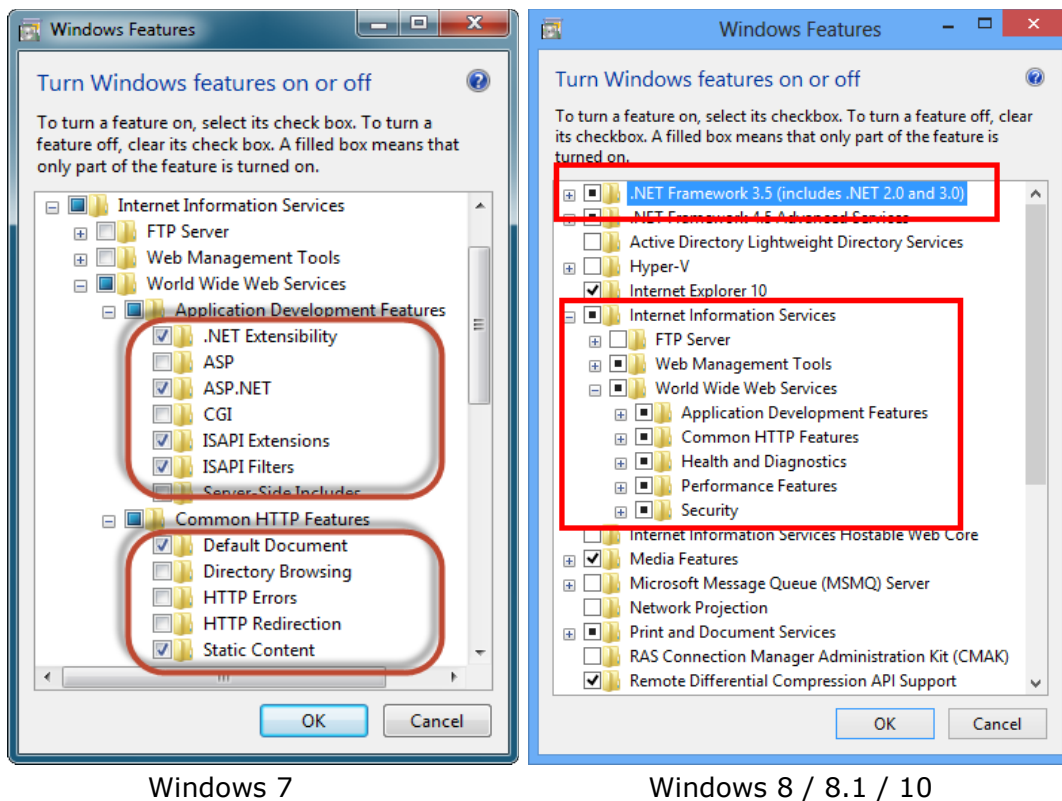
This error occurs when there is a problem reading the configuration file for the Web server or Web application. In some cases, the event logs may contain more information about what caused this error.

[View more information »](#)

In this case, you have the option to install the required ASP.NET components.

Select Components and Functions

Select: Control panel > Programs and features > turn Windows features on or off.



Activate and confirm the required options under Internet Information Services > World Wide Web Services > Application Development Features > **ASP.NET** and Common HTTP Features > **Static Content**. Then the activated check boxes should look like in the picture above.

Note: Since Windows 8.1, the required **.NET Framework 3.5** is no longer delivered as automatically activated. This feature must be activated manually via the control panel in any case before the installation, because the Visu Pro Smart Assistant setup does not.

The standard port of the Smart Assistant is 8082. You have to open this port in the windows firewall, if you are planning to use the Smart Assistant from a different pc.

3.2 Operation

To avoid working with obsolete project states, it is not allowed to use the **back button** of the browser.

3.3 Redo/Undo

You can use the **Redo** and **Undo** functions up to five steps.

4 First Run

To open the JUNG Visu Pro Smart Assistant in the browser, enter the address <http://localhost:8082> (if the Smart Assistant was installed with the default settings).

4.1 Terms of License

When you start the JUNG Visu Pro Smart Assistant for the first time, you have to accept the terms of license. With acceptance of the license agreement the software can be activated.

4.2 Registration/Software-Activation

After accepting the license agreement, you will be prompted by the system to activate the software. The activation can be done at any time and will be displayed again at the beginning of each new browser session, until it is finished.

The program can be used unregistered, it is however not possible to create address reports or worksheets.

After entering the **Serial number**, click on **Code generation** and a **System code** is generated. It must be transmitted via e-mail to Jung GmbH & Co. KG, who generates an **Activation code** and sends it to the user. After correct entry of the activation code and click on **Activate** the program becomes fully operational.

JUNG Smart Assistant activation

1. Enter your serial number:

Serial number:

2. Create a system code:

System code:

3. To obtain an activation code you require an account at: <http://jung.de/en> -> Service -> Purchase software license. Register or log in with your user information, if you already have an existing account. Follow the instructions for purchasing the JUNG Smart Assistant license and enter your generated system code.

<http://www.jung.de>

4. Enter the received activation code in the box and complete the process by confirming the 'Activate' button.

Activation code:

Alternatively, you can postpone the registration by clicking

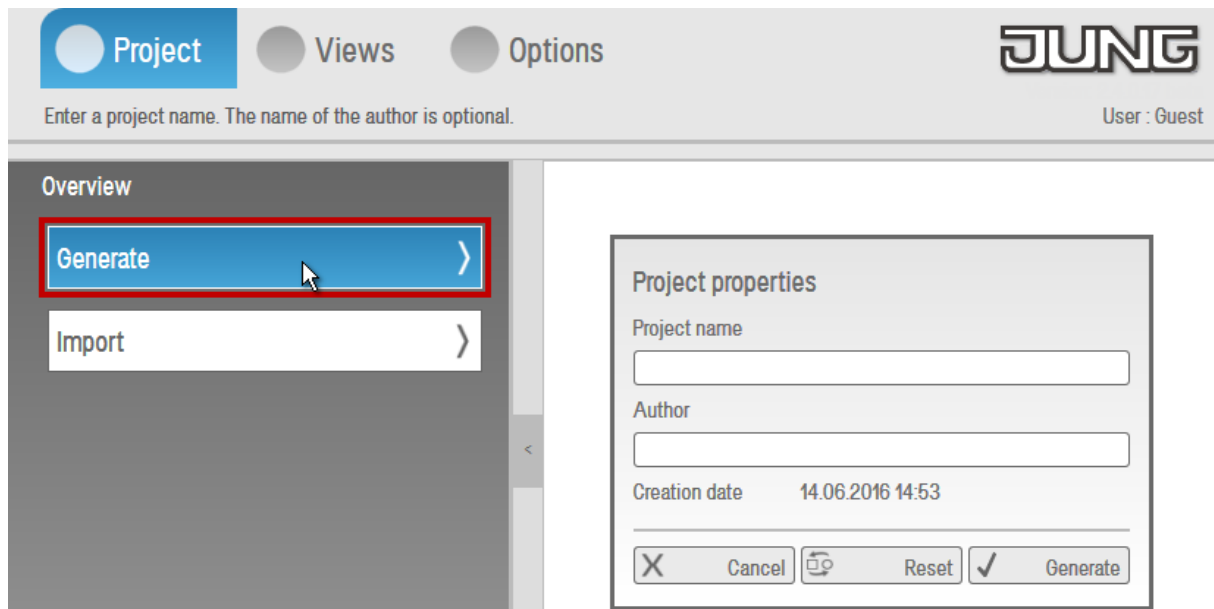
4.2.1 Enter the Activation Code

Please note that you enter the correct format. The valid format of the Smart Assistant consists of *one block of eight characters*. If the activation code is not accepted, try similar letter combinations (for example l instead of I or O instead of 0).

5 Functions

5.1 Create Project

Click the button **Generate** in the directory tree. In the window **Project properties** you can enter the name of the new project under **Project name**, the entry of the **Author's** name is optional.



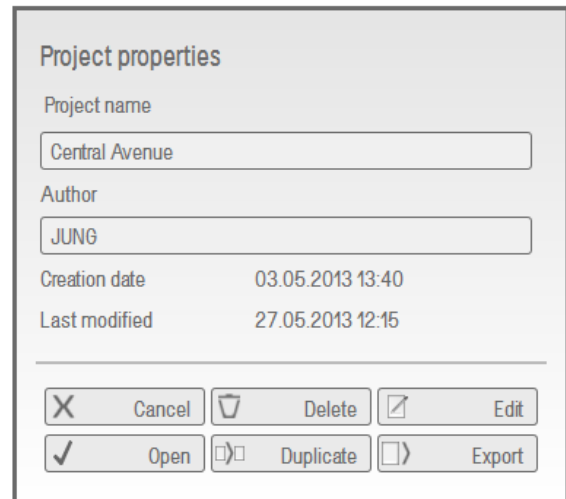
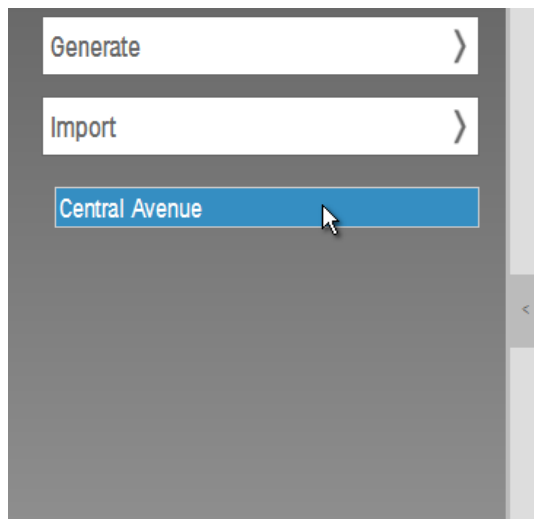
Cancel closes the window and discards the changes.

Reset deletes the text entered in the input fields.

Generate creates a new project and you can see it left-hand in the directory tree.

5.2 Edit Project Properties

Clicking on a project in the directory tree opens the window **Project properties**. With a click on the **Edit** button, you can modify the entries **Project name** and **Author**. Clicking on the newly added button **Save** stores the changes.



Cancel closes the window and discards the changes.

Delete deletes the project after a confirmation prompt.

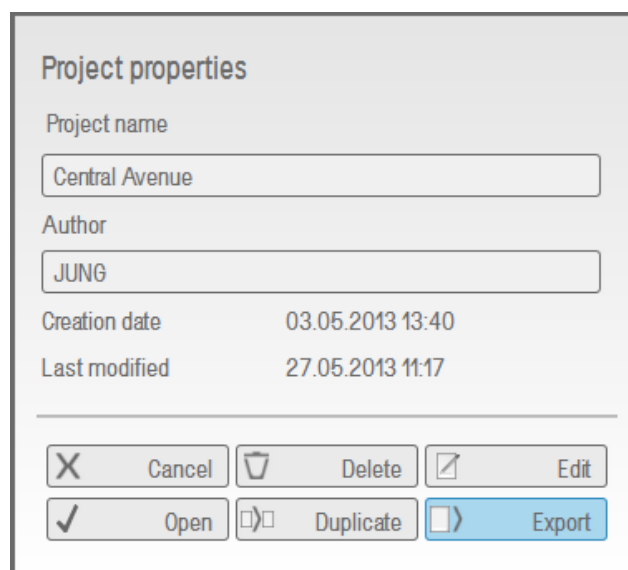
Open opens the project for editing.

Duplicate creates a copy of the project. Clicking this button opens a window in which you must enter the project name of the duplicate under the project name of the original file.

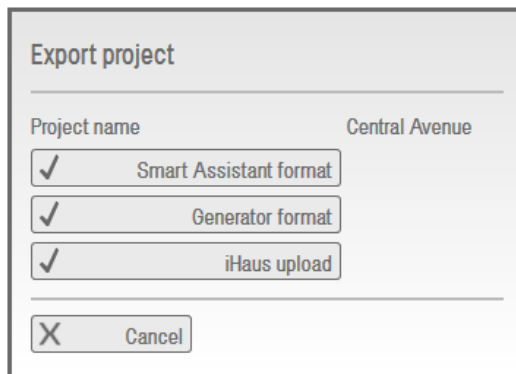
Export exports the project optionally in the Smart Assistant format (for the import into the Smart Assistant) or in the Generator format (for the worksheet generation in an additional program).

5.3 Export Project

To be able to export a project, the project has to be closed. In the project tree, select the desired project and activate the button **Export**.



The project can be exported in different formats.



The dialog box titled "Export project" has a header bar. Below it, the "Project name" is "Central Avenue". There are three checked options: "Smart Assistant format", "Generator format", and "iHaus upload". A "Cancel" button is at the bottom left.

The export in the Smart Assistant format generates a valid Smart Assistant project file and enables the project import of this file in the Smart Assistant. In this case, the file extension <Project name>.**NAVPRJ** is attached to the project name.

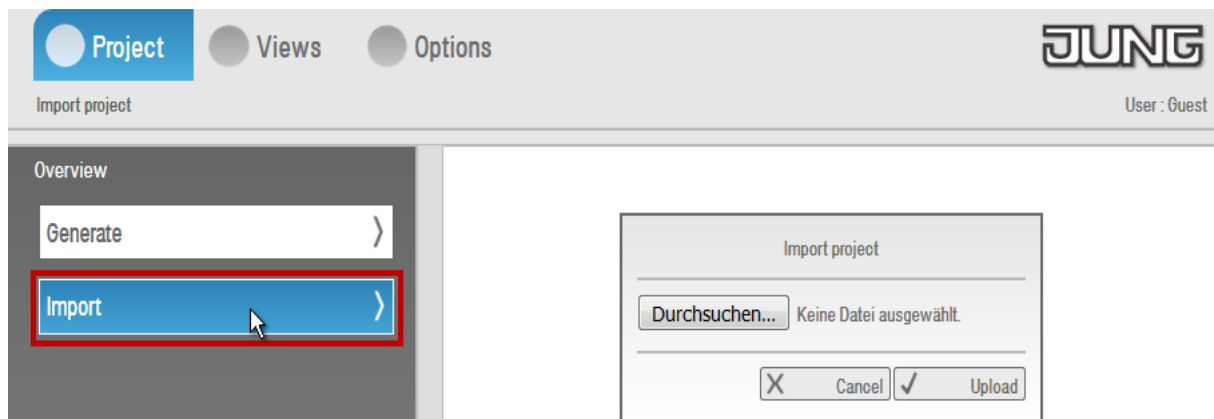
The export in the Generator format enables the creation of worksheets for a visualization project with the help of the Visu Pro Worksheet Generator. In this case, the file extension <Project name>.**NAVGEN** is attached to the project

name.

iHaus upload allows you to upload a project to iHaus.

5.4 Import Project

To import a valid Smart Assistant project file with the file extension **.NAVPRJ**, click the button **Import** in the directory tree. The imported project file can not be larger than 4MB.



6 Editing Project

6.1 Editing Bar

Show/hide template: Shows or hides the template.

Copy: Copies the selected element (with all settings and lower elements [if available]) into the clipboard.

Paste/Paste from template: Inserts the previously copied or in the template selected element at a specific place (if a proper higher element is selected).

Delete: Deletes a selected element.

Undo: Undo the last changes.

Redo: Redo the last changes.

Close project: Closes the current project.

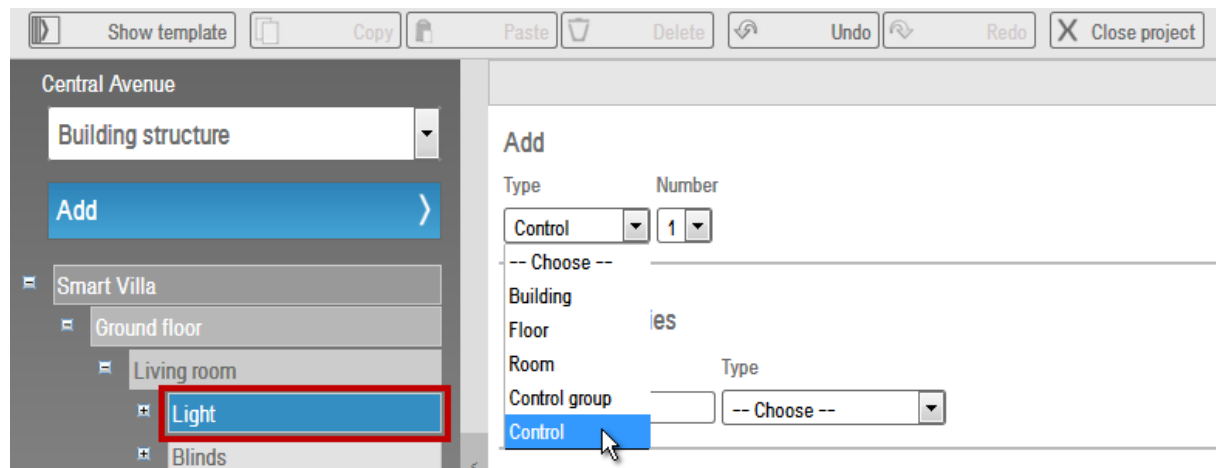
6.2 Building Structure

To add elements to a project, open the project first. After that choose **Building structure** from the drop-down menu in the directory tree. Then click on the button **Add** and choose **Building, Floor, Room, Control group** or **Control** in the drop-down menu under **Type**.

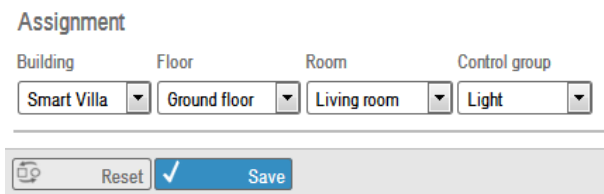
6.2.1 Note Regarding the Procedure

Preferably you first select the component to which the new element is assigned to. This way, the allocation will be done automatically.

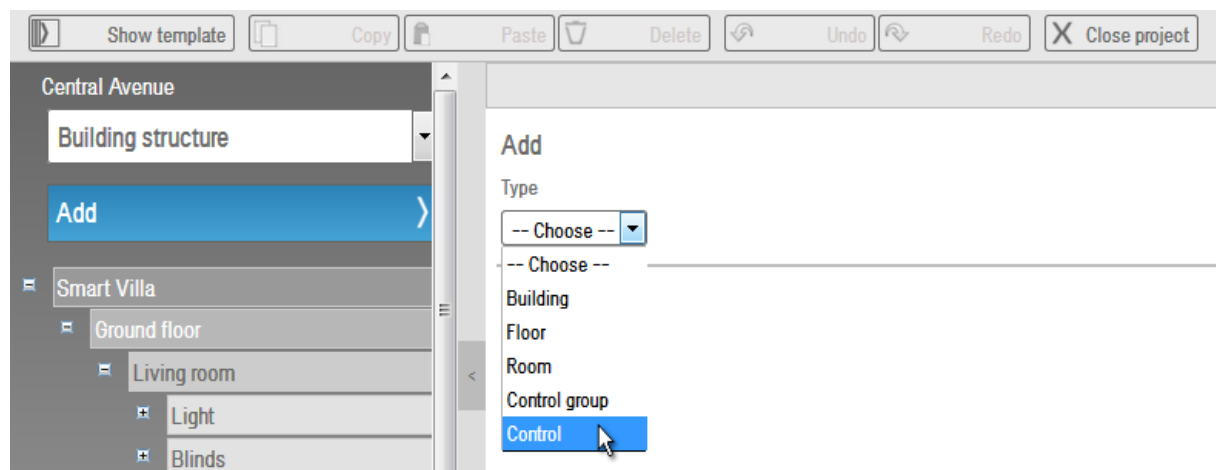
Example: A control is assigned to the control group **Light** in the Living room.



In this case the path is: Smart Villa, Ground floor, Living room, Light:



If you add elements without having selected a component, you have to choose the path manually. Example: A control is assigned to the control group **Light** in the Living room.



In this case you have to choose each component manually:

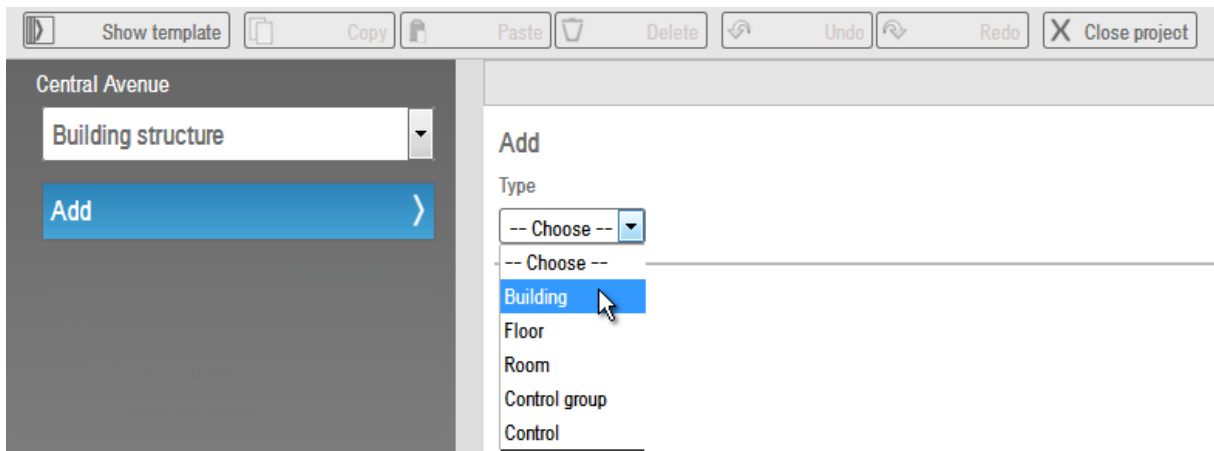
Assignment

Building	Floor	Room	Control group
-- Choose --	-- Choose --	-- Choose --	-- Choose --

Reset Save

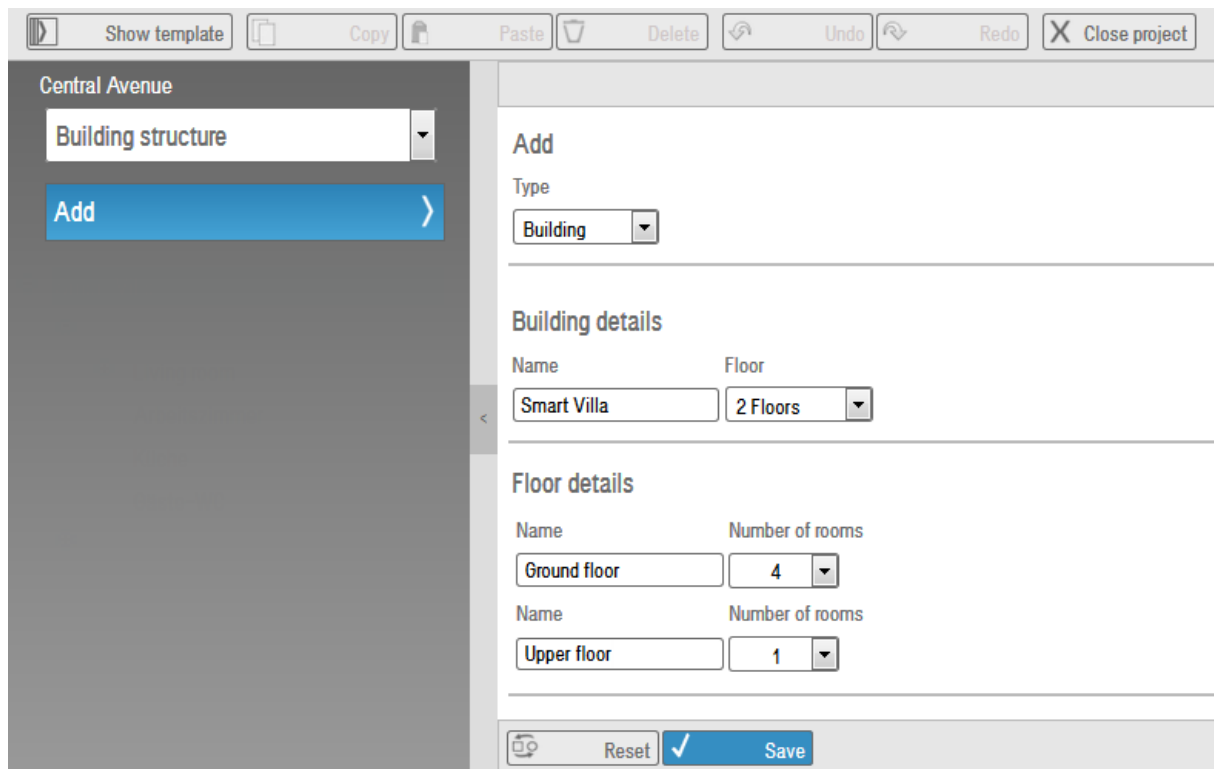
6.2.2 Add Buildings

Open the desired project. After that choose **Building structure** from the drop-down menu in the directory tree and then click the **Add** button. Then select **Building** in the drop-down menu under **Type**.

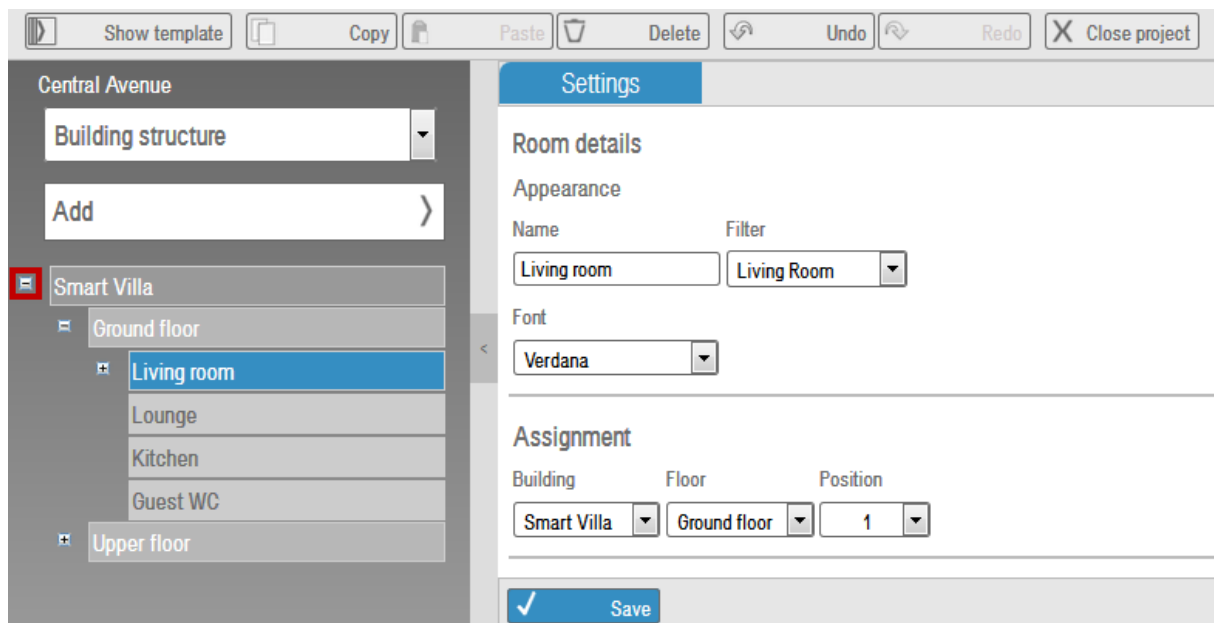


Under **Building details** you can enter the name, and under **Floors** in the drop-down menu you can select the number of floors (up to five floors at once are possible, the total number of floors is unlimited).

Selecting the number of floors opens input fields for the **name** and selection menus for the **number of rooms** for each floor under *Floor details*.



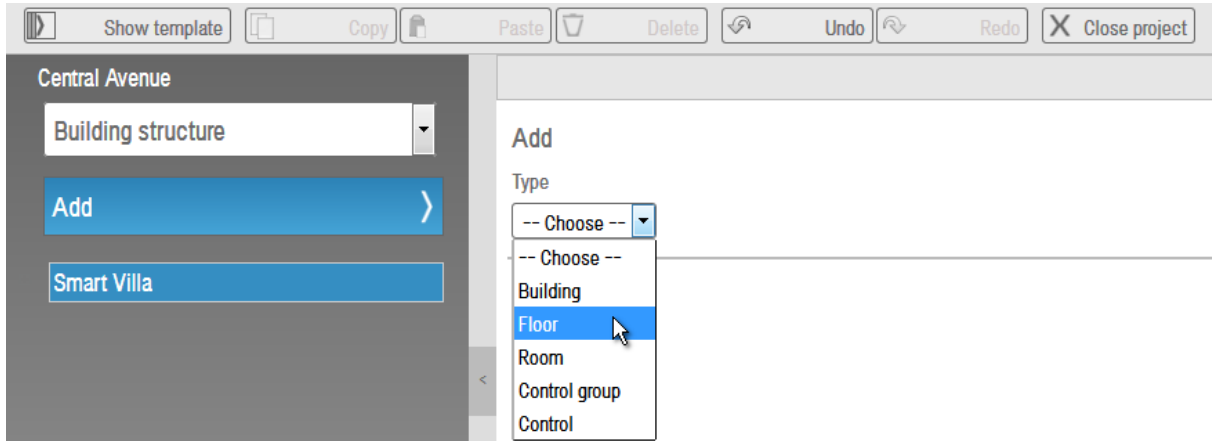
Reset resets to the status before editing.
Save stores the changes.



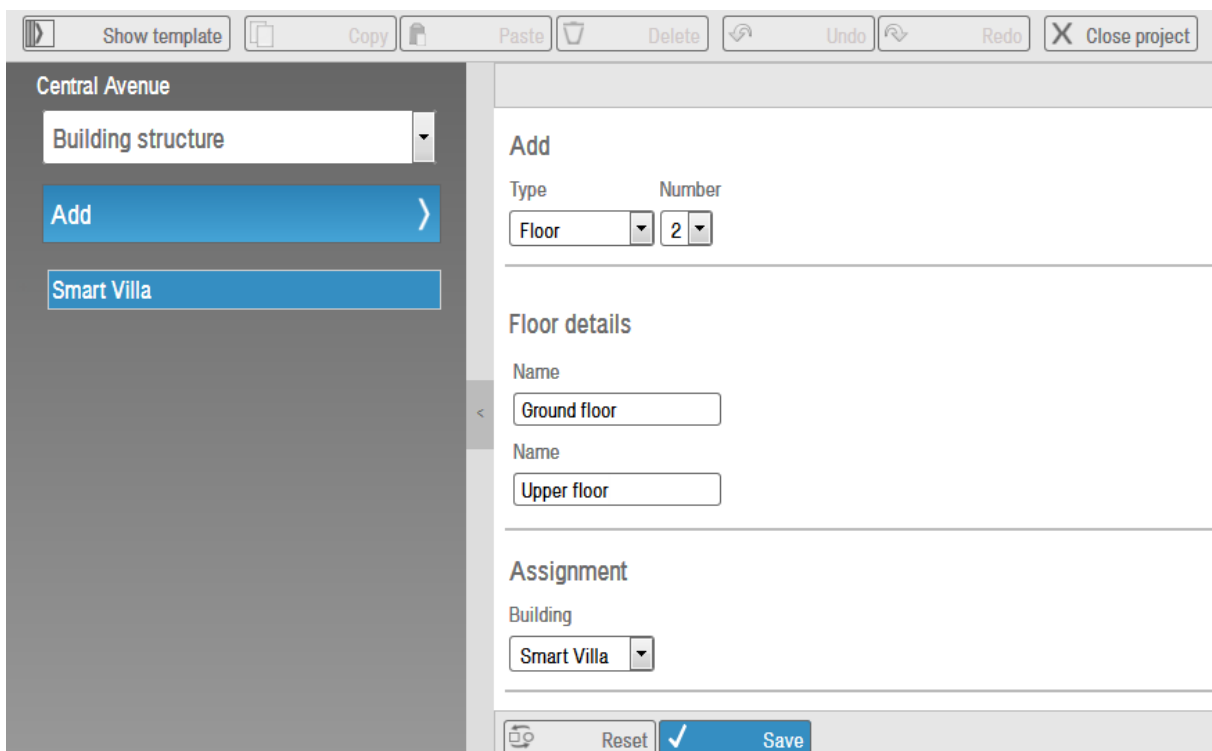
A click on the small symbol to the left of the component name opens or minimizes the directory tree.

6.2.3 Add Floors

Choose **Building structure** from the drop-down menu in the directory tree. Select the building to which the floor is assigned to. Afterward click the **Add** button, then select **Floor** in the drop-down menu under **Type**.



Select the number of floors in the drop-down menu (up to five floors at once are possible, the total number of floors is unlimited). Now you can find input fields to enter a name for each floor under **Floor details**. Under **Assignment**, floors can be assigned to another building.

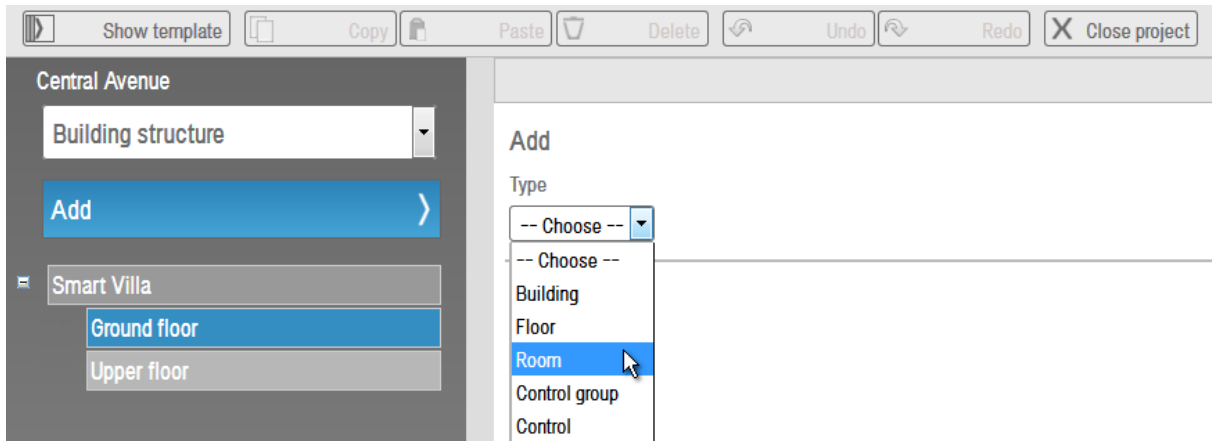


Reset resets the entries to the status before editing.

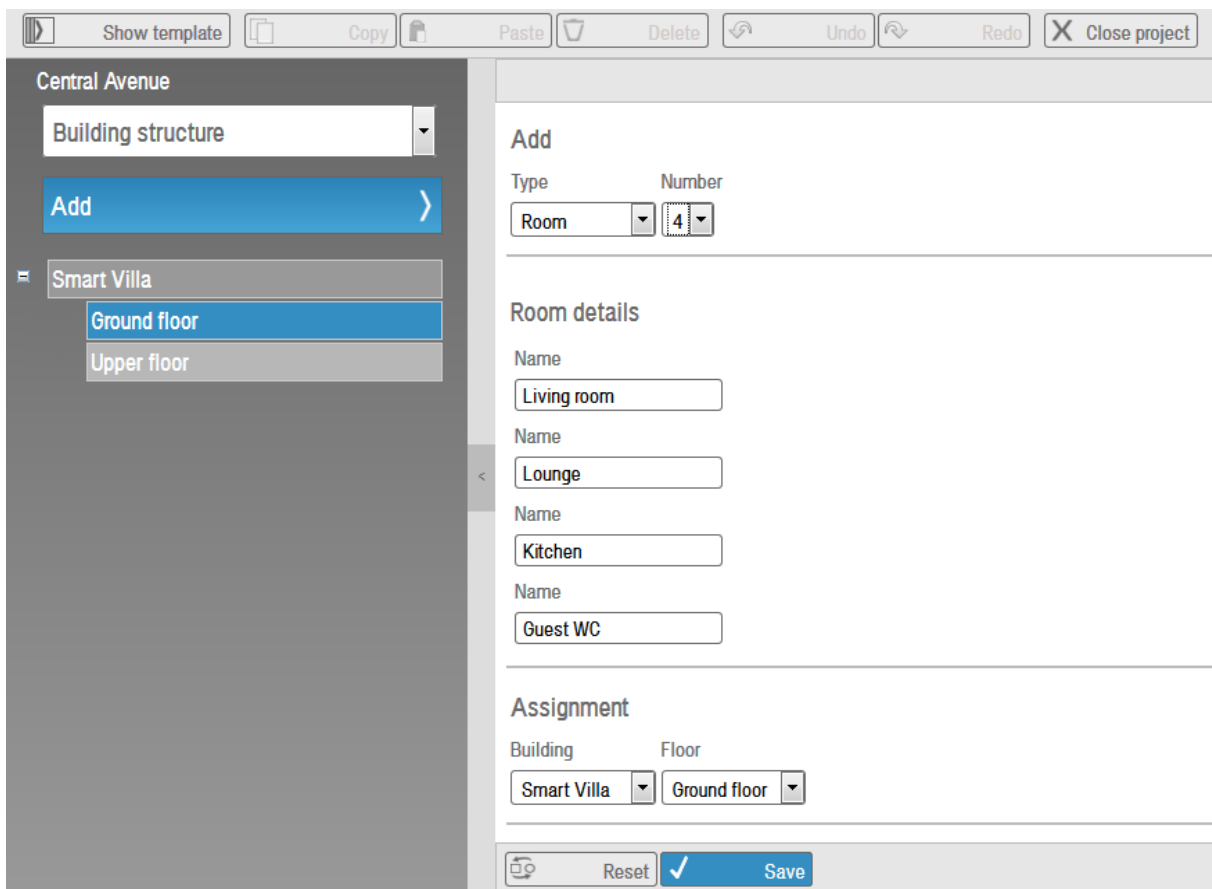
Save stores the changes, you will now find the generated floors left-hand in the directory tree.

6.2.4 Add Rooms

Choose **Building structure** from the drop-down menu in the directory tree. Select the floor to which the room is assigned to. Afterward click the **Add** button, then select **Room** in the drop-down menu under **Type**.



Select the number of rooms in the drop-down menu (up to five rooms at once are possible, the total number of rooms is unlimited). Now you can find input fields to enter a name for each room under **Room details**. Under **Assignment**, rooms can be rearranged.

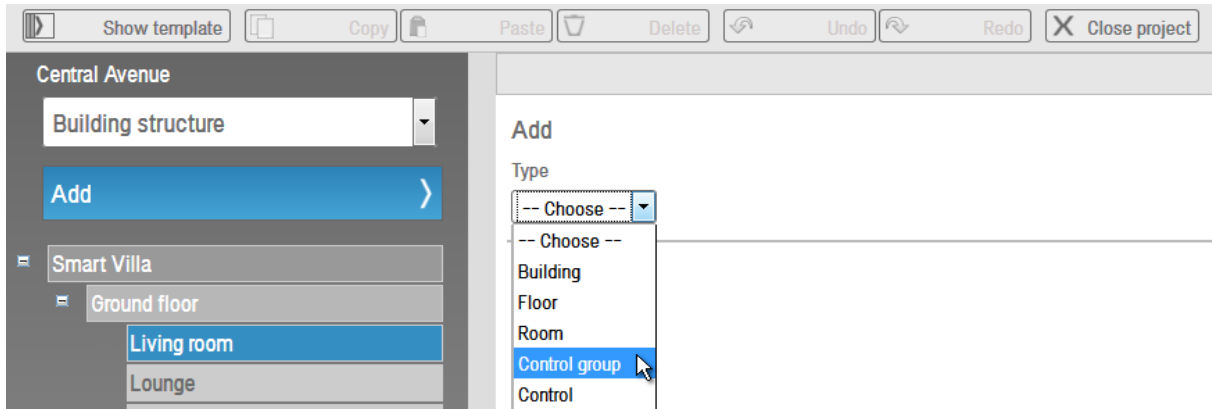


Reset resets the entries to the status before editing.

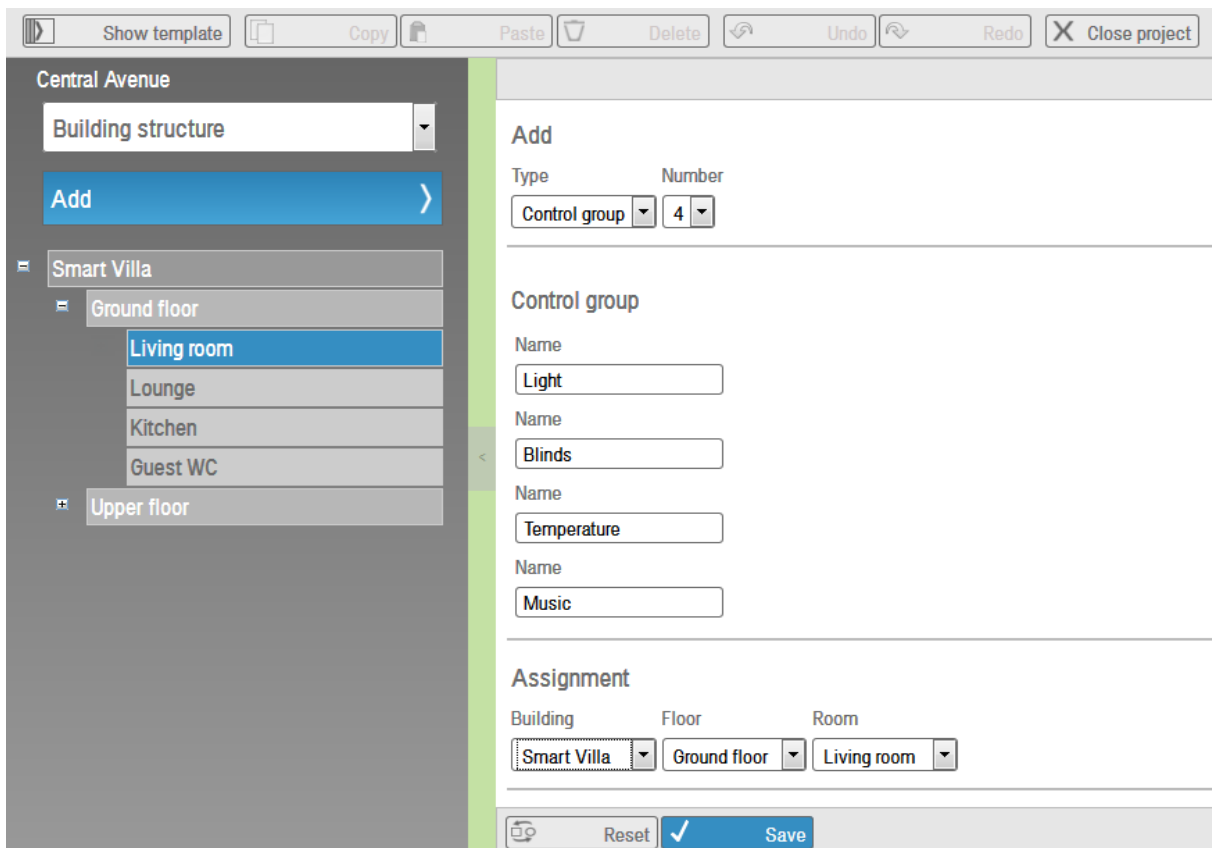
Save stores the changes, you will now find the generated rooms left-hand in the directory tree.

6.2.5 Add Control Groups

Choose **Building structure** from the drop-down menu in the directory tree. A control group integrates all control elements which can be selected as a group in the user interface of a Visu Pro visualization. To add control groups, first select the room to which you wish to assign the control groups. Then click the button **Add** and select **Control group** from the selection menu under **Type**.



Select from the selection menu the number of the control groups to be added (up to five groups at once are possible, the total number of control groups is unlimited). For each control group, an entry field for the name is now available under **Control group**.



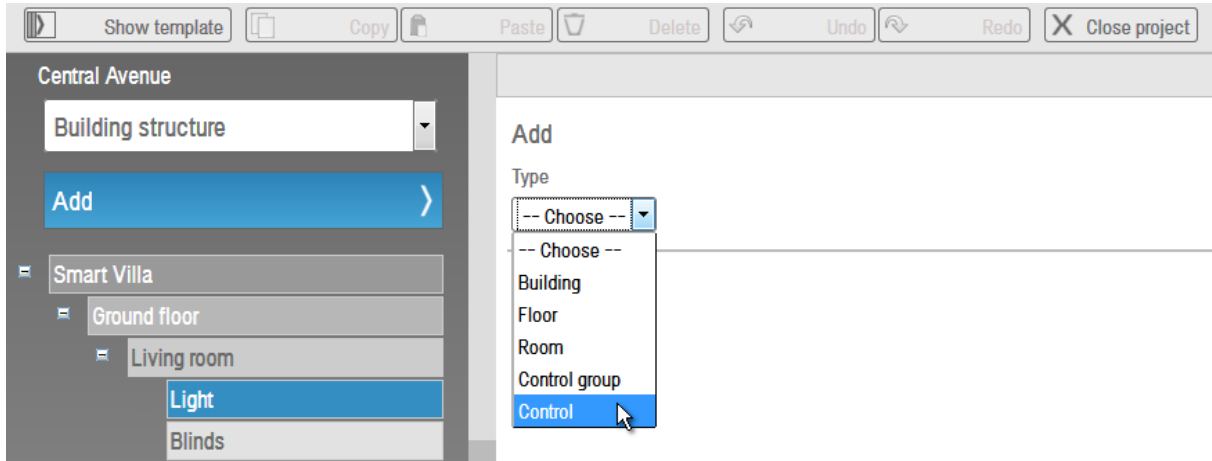
Under **Assignment** you can change the assignment of the control group.

Reset resets the entries to the status before editing.

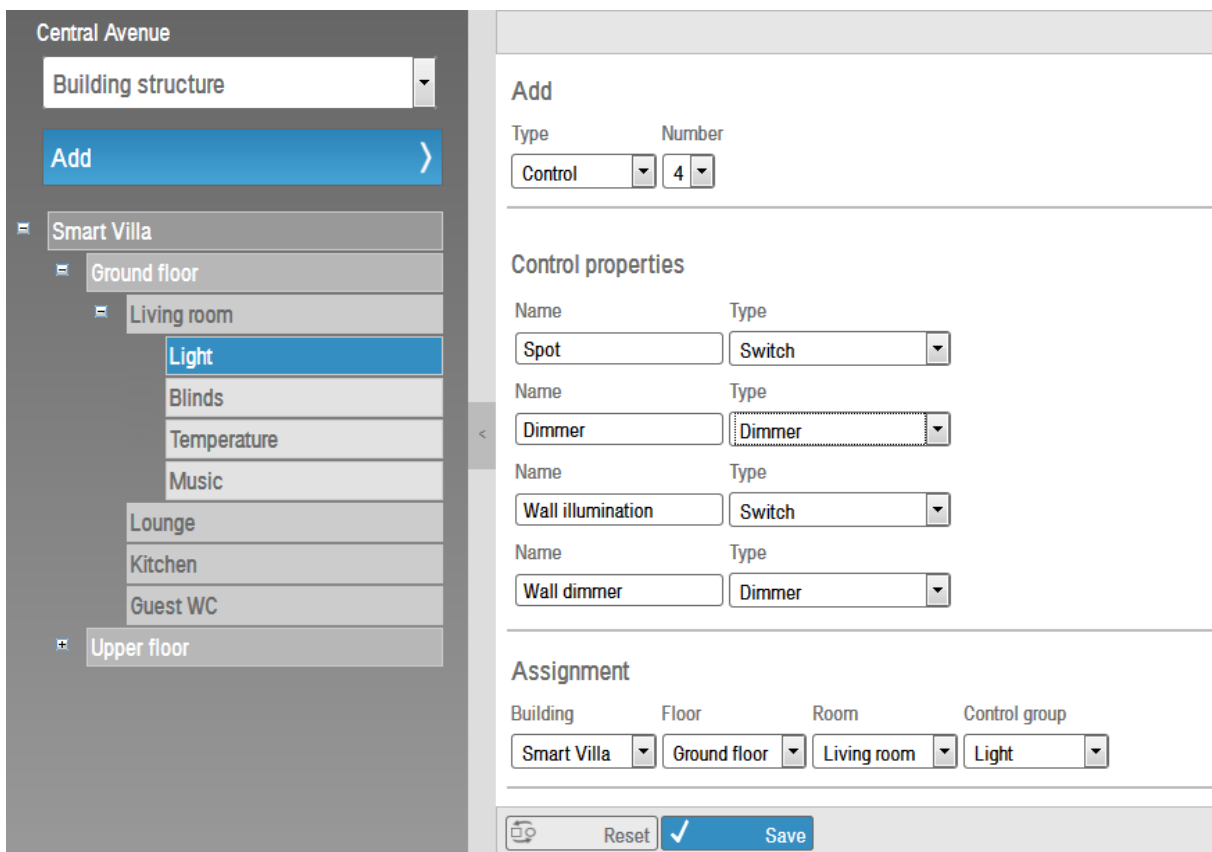
Save stores the changes. The generated control groups are now available left-hand in the directory tree.

6.2.6 Add Controls

Choose **Building structure** from the drop-down menu in the directory tree. Select the control group to which the control is assigned to. Afterward click the **Add** button, then select **Control** in the drop-down menu under **Type**.



Select the number of controls in the drop-down menu (up to five controls at once are possible, the total number of controls is unlimited). Now you can find input fields to enter a name and drop-down menus to select the type of each control under **Control properties**.

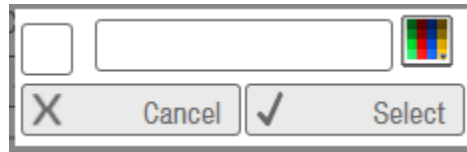


Under **Assignment** controls can be rearranged.

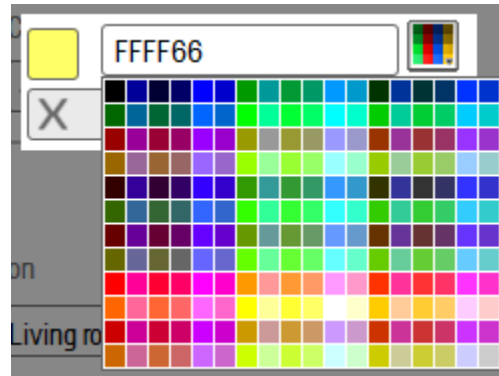
Reset resets the entries to the status before editing.

Save stores the changes, you will now find the generated controls left-hand in the directory tree.

In this window you can modify the name of the control. With a click on **Standard** beside the color box, you can reset the color matching to default. Clicking on **Select** opens the following window. Here you can enter a color value directly:



A further click on the small color picker opens it and you can select a color or enter a color code directly:



Cancel closes the color box without saving changes.
Select takes over the color value.

Overview of all possible settings for controls

Control	Color for the name	Color for the value	Font	Connection	Minimal and maximal value
Switch	✓	ON/OFF	✓	✓	
	Increment	Usable in time switch	Usable in store scene	Addable to status page	Other
		✓	✓	✓	

Control	Color for the name	Color for the value	Font	Connection	Minimal and maximal value
Dimmer	✓	✓	✓	✓	✓
	Increment	Usable in time switch	Usable in store scene	Addable to status page	Other
	✓	✓	✓	✓	

Control	Color for the name	Color for the value	Font	Connection	Minimal and maximal value
Blind	✓	✓	✓	✓	✓
	Increment	Usable in time switch	Usable in store scene	Addable to status page	Other
		✓	✓	✓	

Control	Color for the name	Color for the value	Font	Connection	Minimal and maximal value
Slat	✓	✓	✓	✓	✓
	Increment	Usable in time switch	Usable in store scene	Addable to status page	Other
				✓	

Control	Color for the name	Color for the value	Font	Connection	Minimal and maximal value
Basic setpoint	✓	✓	✓	✓	✓
	Increment	Usable in time switch	Usable in store scene	Addable to status page	Other
		✓		✓	

Control	Color for the name	Color for the value	Font	Connection	Minimal and maximal value
Temperature	✓	✓	✓	✓	✓
	Increment	Usable in time switch	Usable in store scene	Addable to status page	Other
				✓	

Control	Color for the name	Color for the value	Font	Connection	Minimal and maximal value
Basic setpoint shift	✓	✓	✓	✓	✓
	Increment	Usable in time switch	Usable in store scene	Addable to status page	Other
	✓			✓	Number of shifts

Control	Color for the name	Color for the value	Font	Connection	Minimal and maximal value
Operation mode switch	✓	Color „active“/ „inactive“	✓	✓	
	Increment	Usable in time switch	Usable in store scene	Addable to status page	Other
				✓	Comfort, Standby, Night, Antifreeze

Control	Color for the name	Color for the value	Font	Connection	Minimal and maximal value
Operation mode switch over	✓	Color „active“/ „inactive“	✓	✓	
	Increment	Usable in time switch	Usable in store scene	Addable to status page	Other
				✓	Comfort, Standby, Night, Antifreeze

Control	Color for the name	Color for the value	Font	Connection	Minimal and maximal value
Binary display	✓	ON / OFF	✓	✓	
	Increment	Usable in time switch	Usable in store scene	Addable to status page	Other
				✓	

Control	Color for the name	Color for the value	Font	Connection	Minimal and maximal value
Analog display	✓	✓	✓	✓	✓
	Increment	Usable in time switch	Usable in store scene	Addable to status page	Other
				✓	

Control	Color for the name	Color for the value	Font	Connection	Minimal and maximal value
Consumption chart	✓		✓	✓	
	Increment	Usable in time switch	Usable in store scene	Addable to status page	Other
					Connection only to already created charts

Control	Color for the name	Color for the value	Font	Connection	Minimal and maximal value
Time switch	✓	Color „active“/ „inactive“	✓	✓	
	Increment	Usable in time switch	Usable in store scene	Addable to status page	Other
					Connection only to already created time switches

Control	Color for the name	Color for the value	Font	Connection	Minimal and maximal value
Colour Control	✓	Color circle	✓	✓	
	Increment	Usable in time switch	Usable in store scene	Addable to status page	Other
					Range

Control	Color for the name	Color for the value	Font	Connection	Minimal and maximal value
Color Input	✓	Color circle	✓	✓	✓
	Increment	Usable in time switch	Usable in store scene	Addable to status page	Other
				✓	Range

Control	Color for the name	Color for the value	Font	Connection	Minimal and maximal value
Tunable White Control	✓	Color circle	✓	✓	✓
	Increment	Usable in time switch	Usable in store scene	Addable to status page	Other
				✓	Range

Control	Color for the name	Color for the value	Font	Connection	Minimal and maximal value
Dimmer Knob	✓	Color circle	✓	✓	✓
	Increment	Usable in time switch	Usable in store scene	Addable to status page	Other
	✓	✓	✓	✓	

Control	Color for the name	Color for the value	Font	Connection	Minimal and maximal value
Store Scene	✓		✓	✓	
	Increment	Usable in time switch	Usable in store scene	Addable to status page	Other
		✓	✓		

6.3 Connections

Since Version 2.4 of the Visu Pro Smart Assistant group addresses are usable in addition to the filters and symbolic connections.

Select **Group addresses** in the dropdown list of the directory tree to get a list of the existing group addresses.

There are, according to the source of the addresses, differences in the treatment.

Source: symbolic Connections

This group addresses are automatically created. Type and rights, as well as decimal places can not be changed. If a control element is deleted, the corresponding group addresses are deleted, too. (Unless another control element with the same compounds still exists.)

Source: created by control element

Group addresses that have been created in the settings of a control element. Again, type & rights can not be changed. If you delete the control element, all data points are also deleted (unless another control element with the same compounds still exists). If just one of the data points in the control element is deleted, the other associated data points remain.

Source: created by user

By user created group addresses are those who have been created manually in the group address management.

Source: ETS import

The ETS imported group addresses behave like the ones created by user.

Behavior at intersections

Sometimes the group addresses overlap in their use. The Visu Pro Smart Assistant tries thereby to follow the logic of the application.

If, for example, an imported (ETS) group address is used by a control element with a symbolic connection afterwards, the group address is not deleted when deleting the element, because it wasn't created by the control element.

Behavior at copying elements from the template project

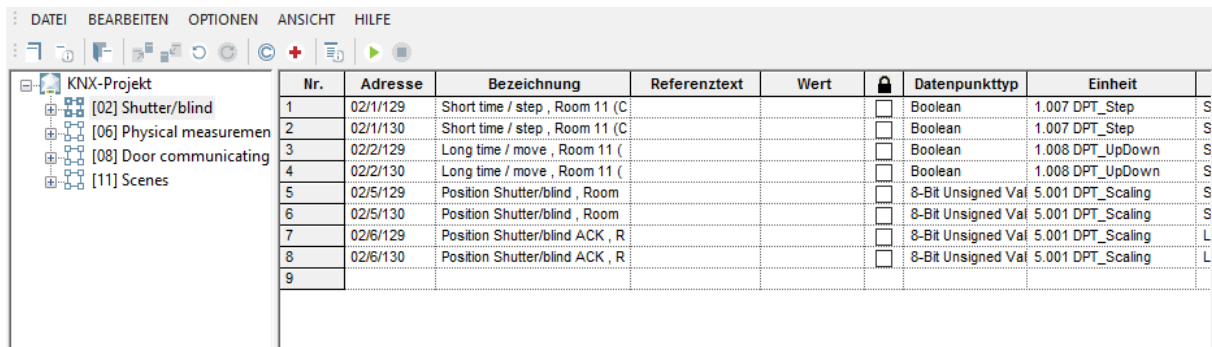
If connected elements get copied from the template, the Visu Pro Smart Assistant checks if the group addresses already exist. In that case only the control elements get copied from the template, without the connections.

6.3.1 Filters and Symbolic Connections

The symbolic links are a tabular association of group addresses, defined by JUNG. This comes into play if a project is generated with the worksheet generator or the export to an address report is done.

The existing symbolic connections are transmitted in a fixed division of group addresses, which are divided into different categories.

For example: The switch can be assigned to addresses, to control light or activate an existing time switch. Adapted to the task the switches have in the project.

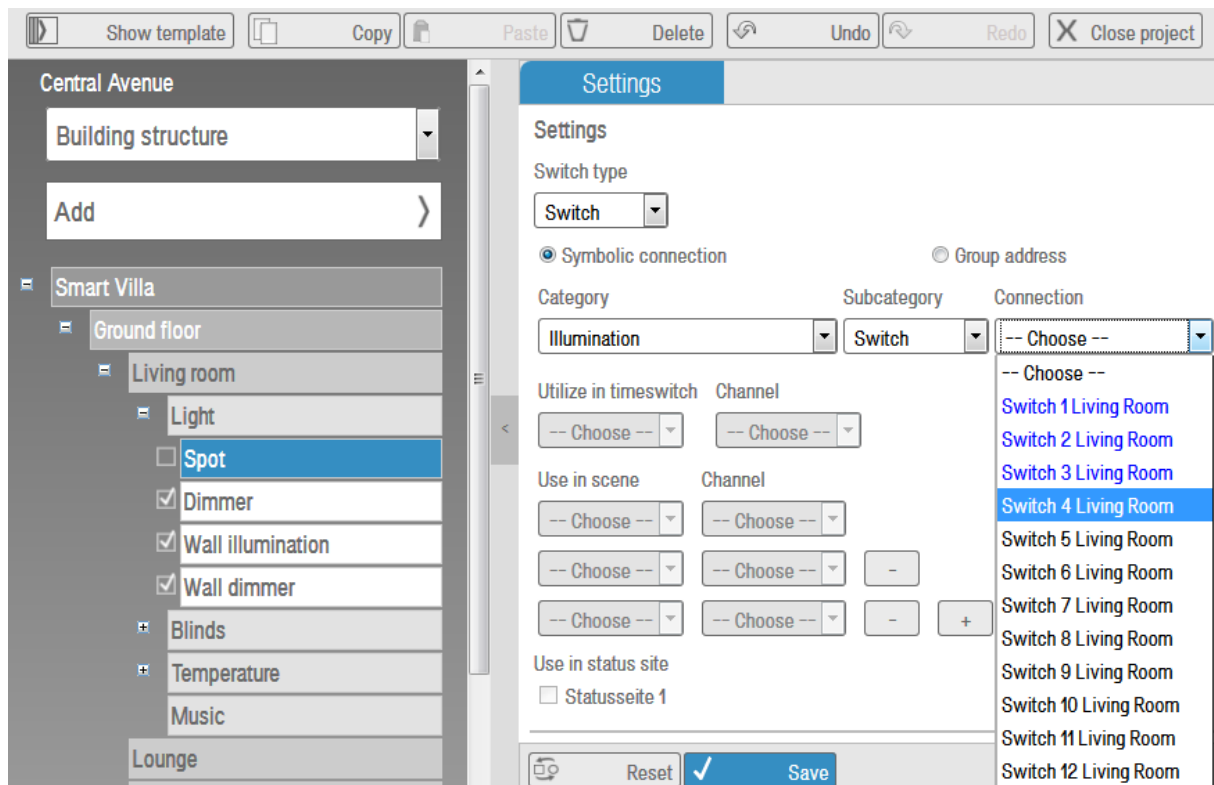


Nr.	Adresse	Bezeichnung	Referenztext	Wert		Datenpunkttyp	Einheit	
1	02/1/129	Short time / step , Room 11 (C			<input type="checkbox"/>	Boolean	1.007 DPT_Step	S
2	02/1/130	Short time / step , Room 11 (C			<input type="checkbox"/>	Boolean	1.007 DPT_Step	S
3	02/2/129	Long time / move , Room 11 (<input type="checkbox"/>	Boolean	1.008 DPT_UpDown	S
4	02/2/130	Long time / move , Room 11 (<input type="checkbox"/>	Boolean	1.008 DPT_UpDown	S
5	02/5/129	Position Shutter/blind , Room			<input type="checkbox"/>	8-Bit Unsigned Val	5.001 DPT_Scaling	S
6	02/5/130	Position Shutter/blind , Room			<input type="checkbox"/>	8-Bit Unsigned Val	5.001 DPT_Scaling	S
7	02/6/129	Position Shutter/blind ACK , R			<input type="checkbox"/>	8-Bit Unsigned Val	5.001 DPT_Scaling	L
8	02/6/130	Position Shutter/blind ACK , R			<input type="checkbox"/>	8-Bit Unsigned Val	5.001 DPT_Scaling	L
9								

Example of an exported KNX project.

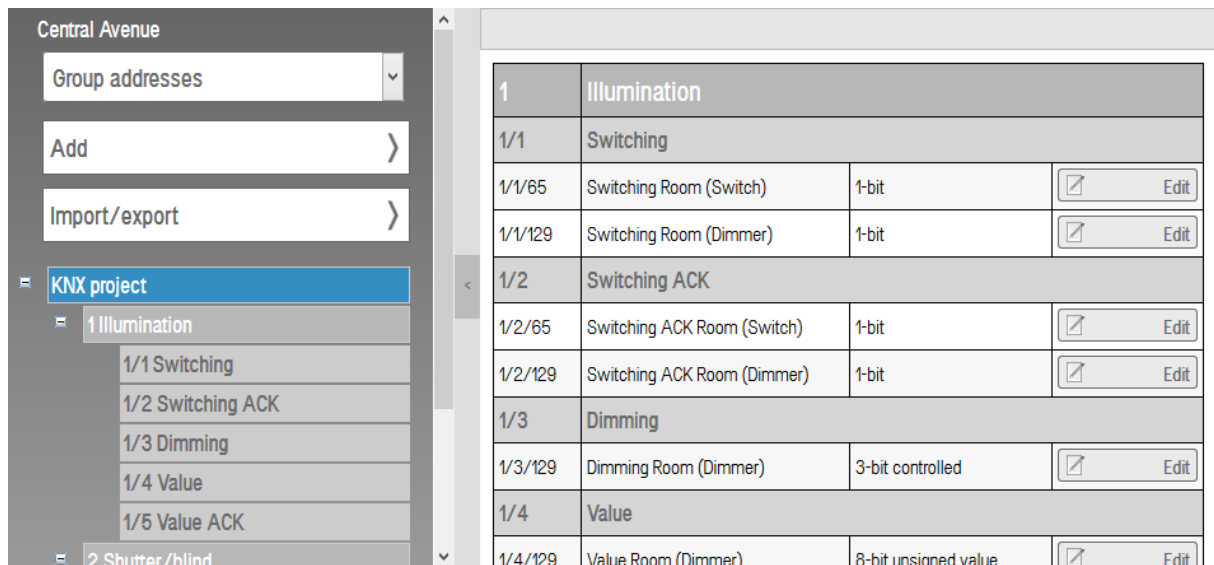
Clicking on a room opens the **Room details** window where a name can be assigned and a filter can be set. That way, it is easier to attach a control in the room to the filter set group.

If you select a control in the room afterward, you can choose a category and a connection under **Settings**. Already assigned connections are shown in **blue**:



Edit Symbolic Connections

If symbolic connections were created, they can be displayed like the user generated group addresses under the menu item **Group addresses**.



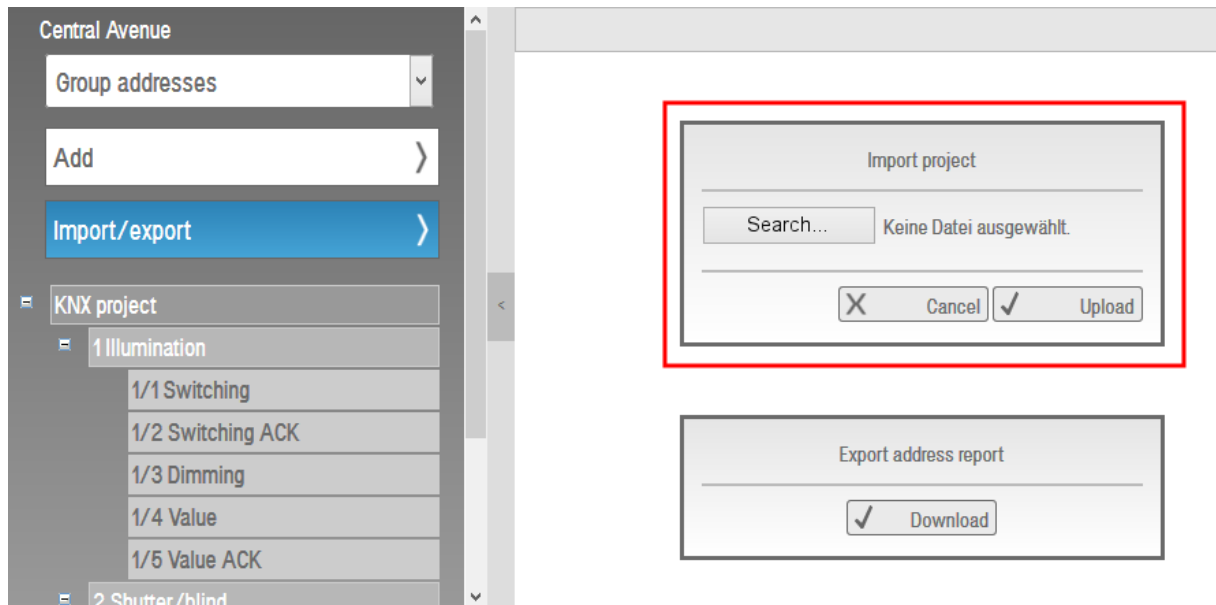
By clicking on the edit button in a group address that belongs to a symbolic link the address details load.

It can be seen, that you can't edit the properties (apart from the description) because the symbolic connections follow the prescribed strict structure.

6.3.2 Group Addresses

Import Of An ETS Project

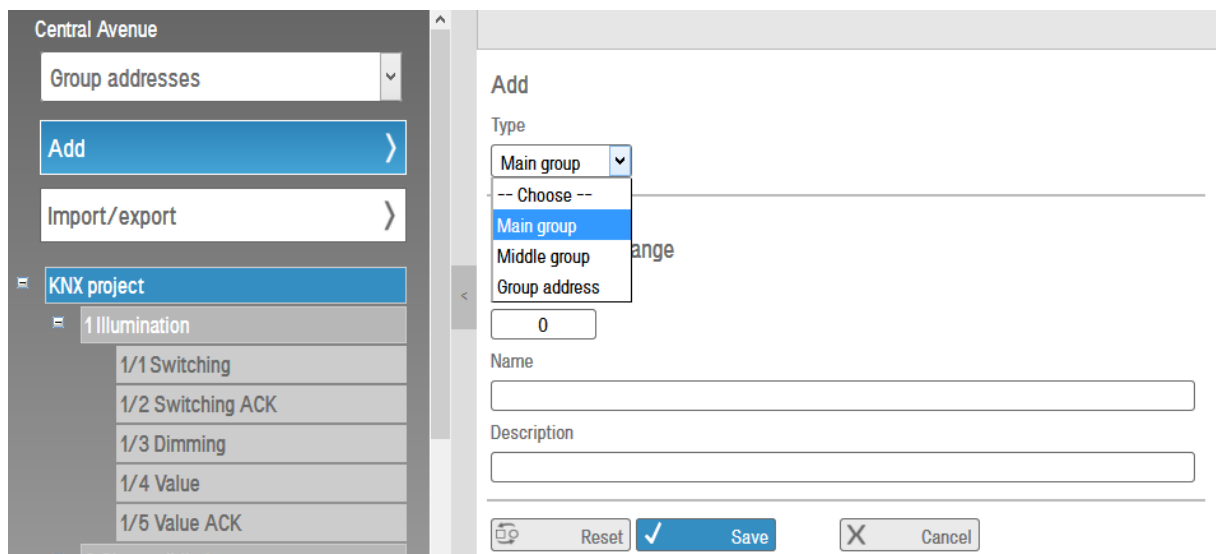
It is possible to import an ETS project file into the Visu Pro Smart Assistant project to use a structure that already exists. Therefore select the menu item Group Addresses in the drop down list and click on import/export. Then you can import a valid ETS project.



The following information are imported from a data point, unless they have already been set in the ETS: Name, description, type, sub type.

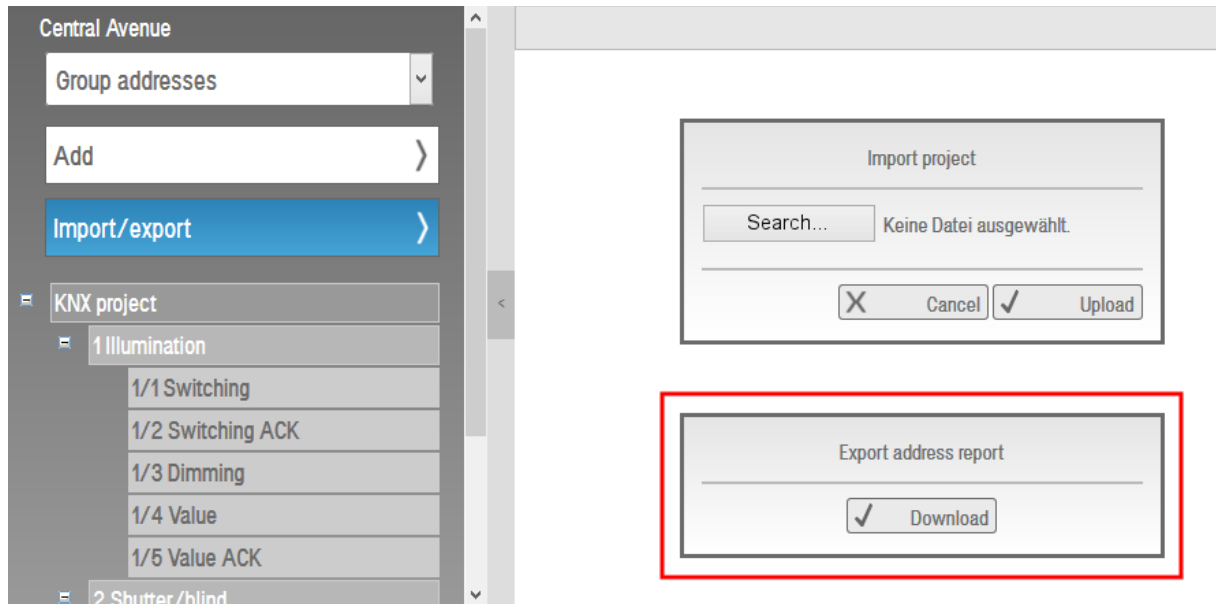
Creating And Managing Group Addresses

With the **Add** button new group addresses can be added.



6.3.3 Export Group Addresses / Symbolic Connections

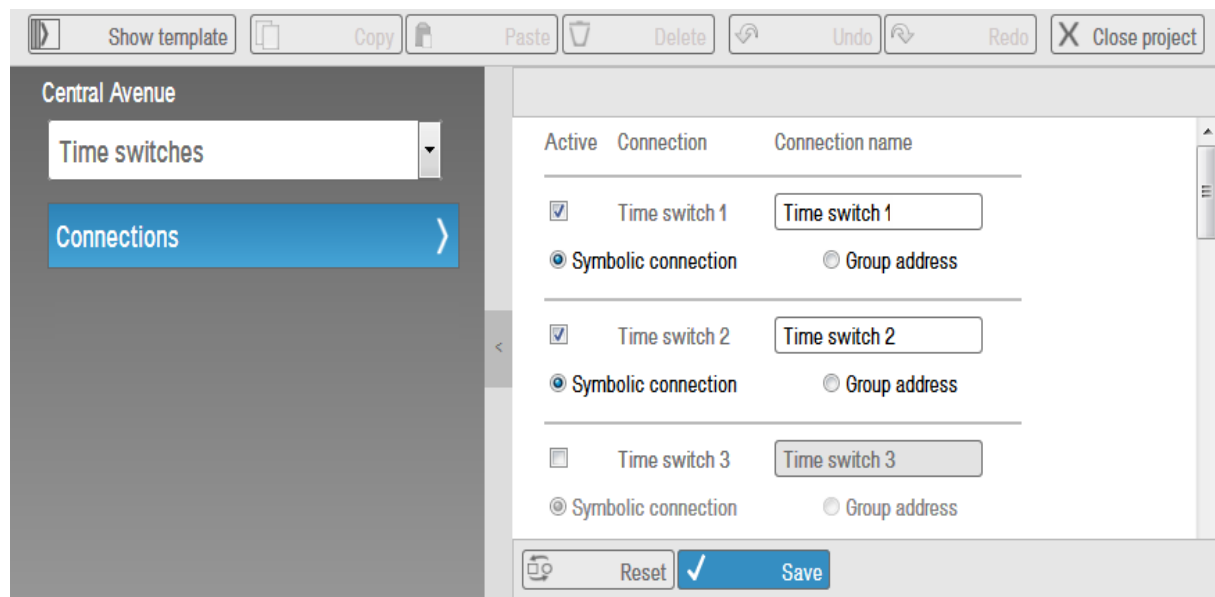
Select **Group addresses** in the directory trees drop down list. With the Import/Export-button you can export the existing address structure in a CSV format.



Note:

When using an iPad, the download is not available.

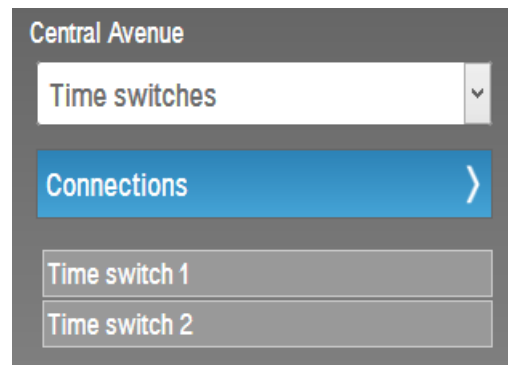
6.4 Weekly Time Switches



Select **Time switches** in the drop-down list of the directory tree, then click on **Connections** and activate the desired time switches by marking check boxes. For a better overview, you can enter an individual name.

Reset resets the made settings.

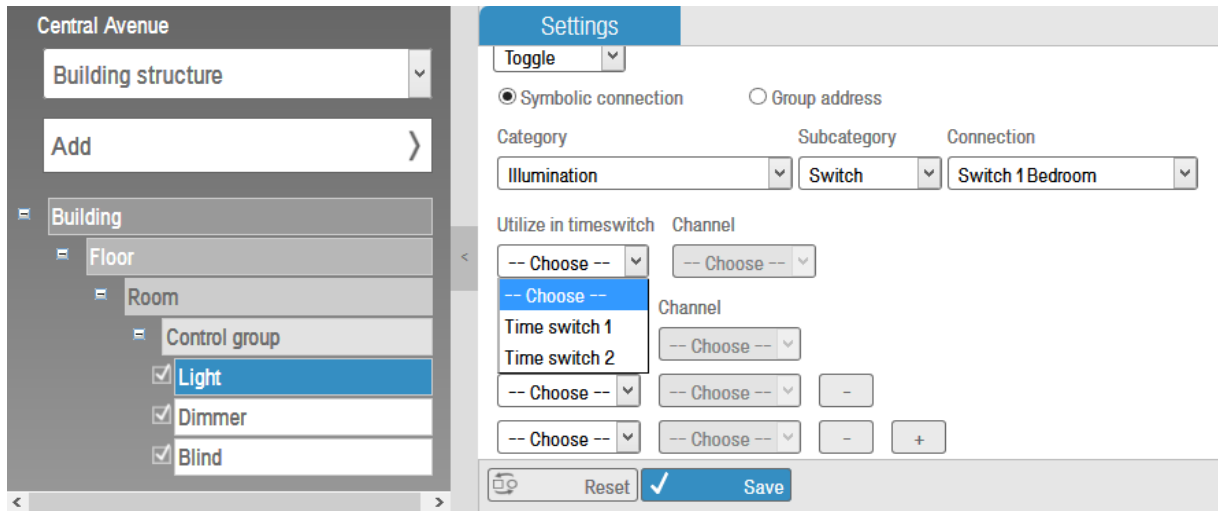
Save saves the settings.



At Time switches, up to 16 time switches can be generated for the project. For those, an own worksheet will be generated when exporting the project to the Visu Pro visualization editor (accessible by the function **Time switch**).

Delete a time switch from the project tree: Select **Time Switches** in the directory tree, click on **Connections** and remove the check mark at the relevant time switch. Finally press the Save-Button and the disabled time switch is deleted.

Note: Only the here created time switches can be controlled at the building structure through time switch controls too.



Time switches are editable and configurable in the HTML interface.

6.5 Store Scenes

Store scenes allow to send multiple parameter values at the same time. For example, a scene can be created, where you can shut down blinds, turn on the lights and change the room temperatures.

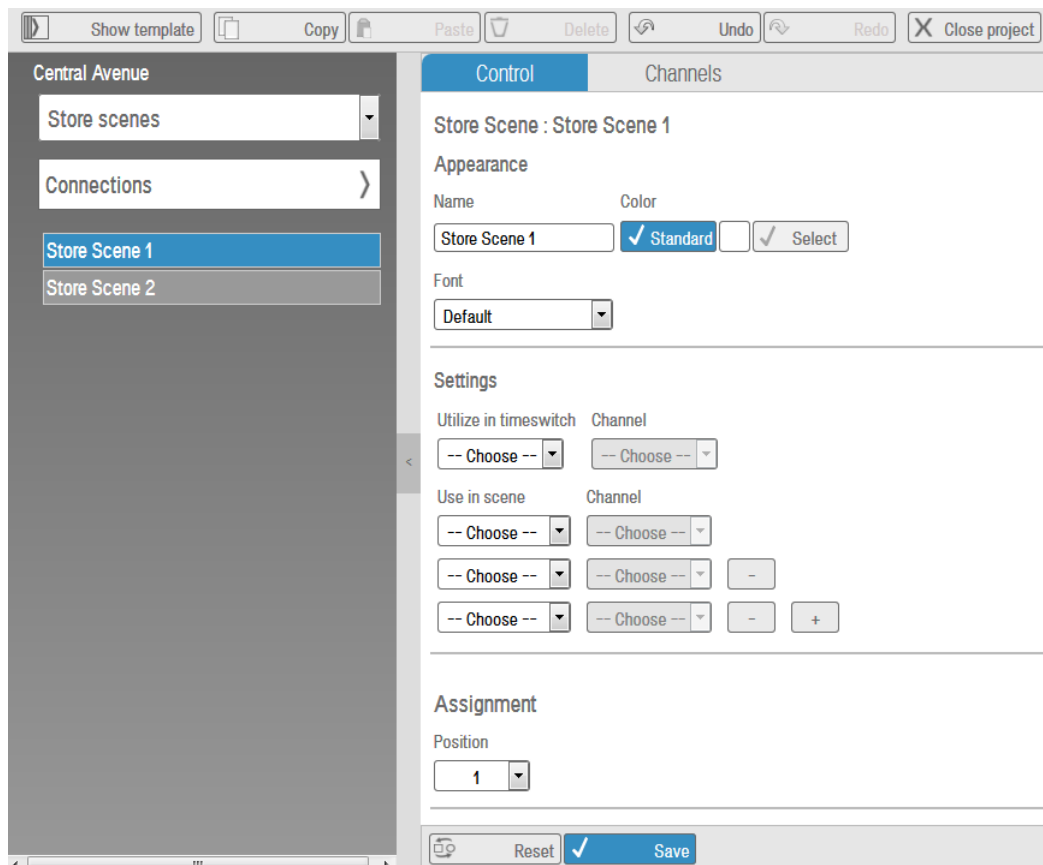
In addition, the store scene allows you to save the current values of all process variables contained in the scene, in a **scene memory**. At the next trigger the scene returns the stored values back to the process.

Select in the drop-down list of the directory tree the point **Store scenes**, then click on **Connections** and activate the desired store scenes by marking check boxes. For a better overview, a name still can be awarded.

Reset resets the made settings.

Save saves the settings.

Up to 16 store scenes can be generated for the project. For those, an own worksheet will be generated when exporting the project to the Visu Pro visualization editor (accessible by the function **Store scenes**).



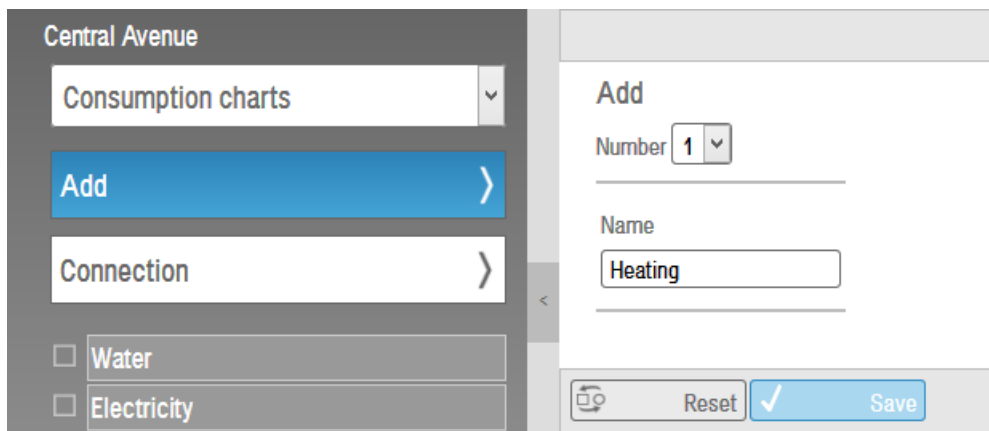
Store scenes are editable and configurable in the HTML interface.

Delete a store scene from the project tree: Select **Store scenes** in the directory tree, click on **Connections** and remove the check mark at the relevant store scene. Finally press the Save-Button and the disabled store scene is deleted.

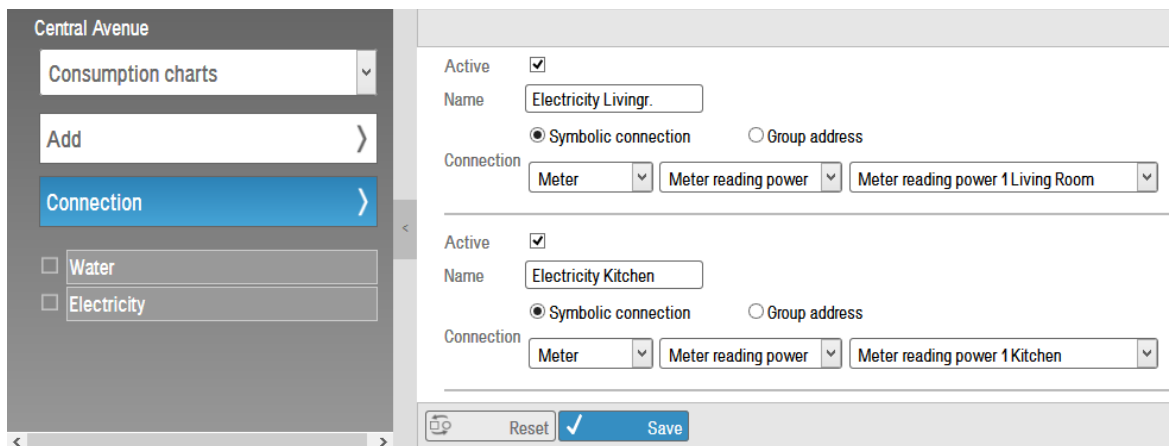
Note: The symbolic connection of a control can be set in several scenes.

6.6 Consumption Chart

Creating a consumption chart:



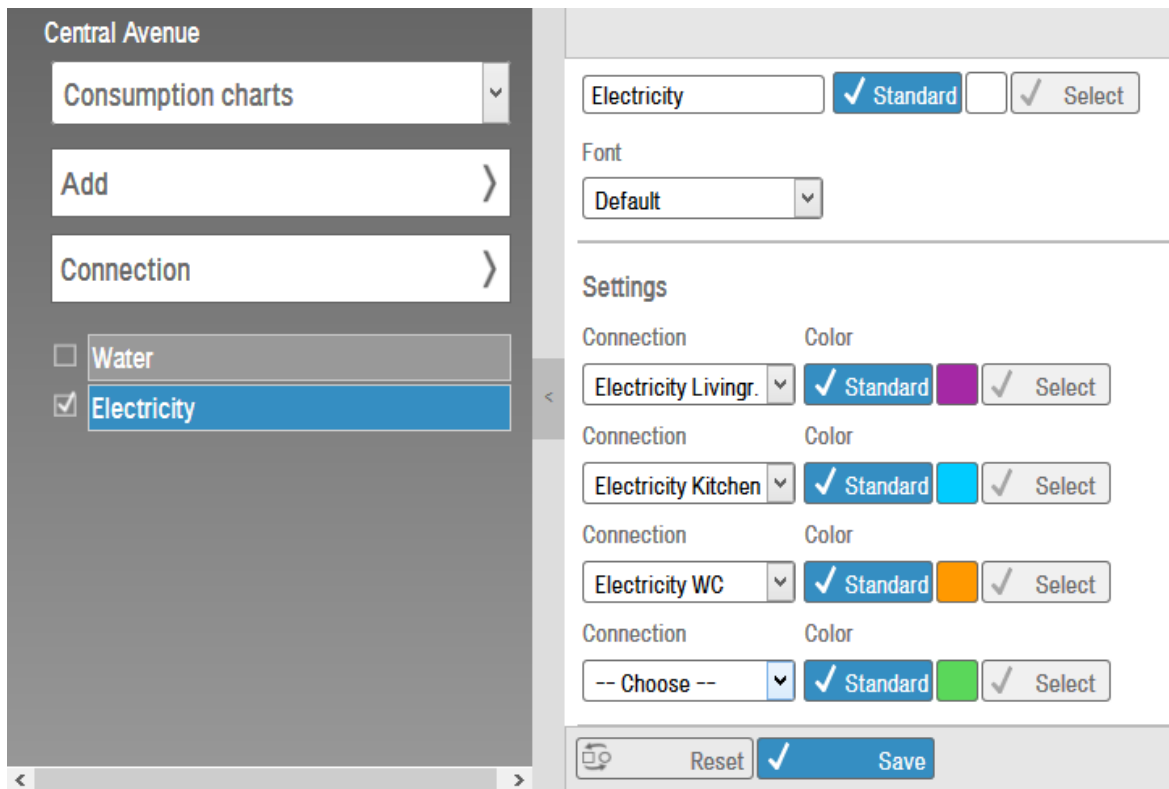
1. Select **Consumption chart** in the drop down menu of the project tree and click on **Add**. Now you can choose the number of consumption charts you want to add (up to 5 at the same time, the total number is unlimited) and you can assign a name. To save your settings click on the **Save** button.



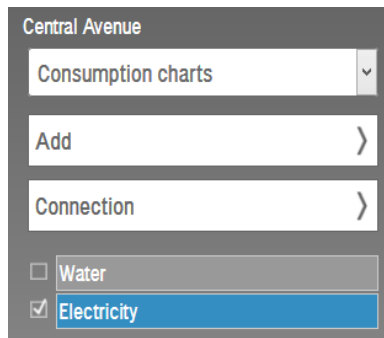
2. Click **Connections** in the directory tree. Enable connections by clicking the check box next to **Active**, rename it and select in the drop-down menus the desired settings.

Up to **16** consumption data connections can be generated. These are divided according to the used addressing scheme.

After that you can add as many consumption data elements as desired. In each one up to **4** connections can be set from the **16** possibilities.



- Click on a chart in the directory tree. Beneath **Appearance** you can change the name of the consumption chart and choose a color and font. Beneath **Settings** you can specify a color for the curve and the connection that where previously created in step 2. Under **Assignment** the order of the consumption charts can be selected.

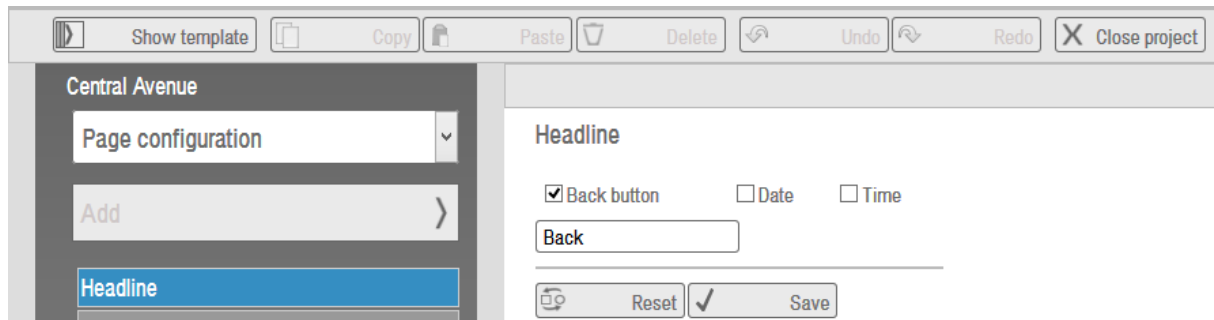


Save your settings and in the directory tree appears a check mark in the check box, which shows that there are connections to this chart.

For those elements an own worksheet will be generated when exporting the visualization project, this can be called with the consumption data function.

6.7 Page Settings

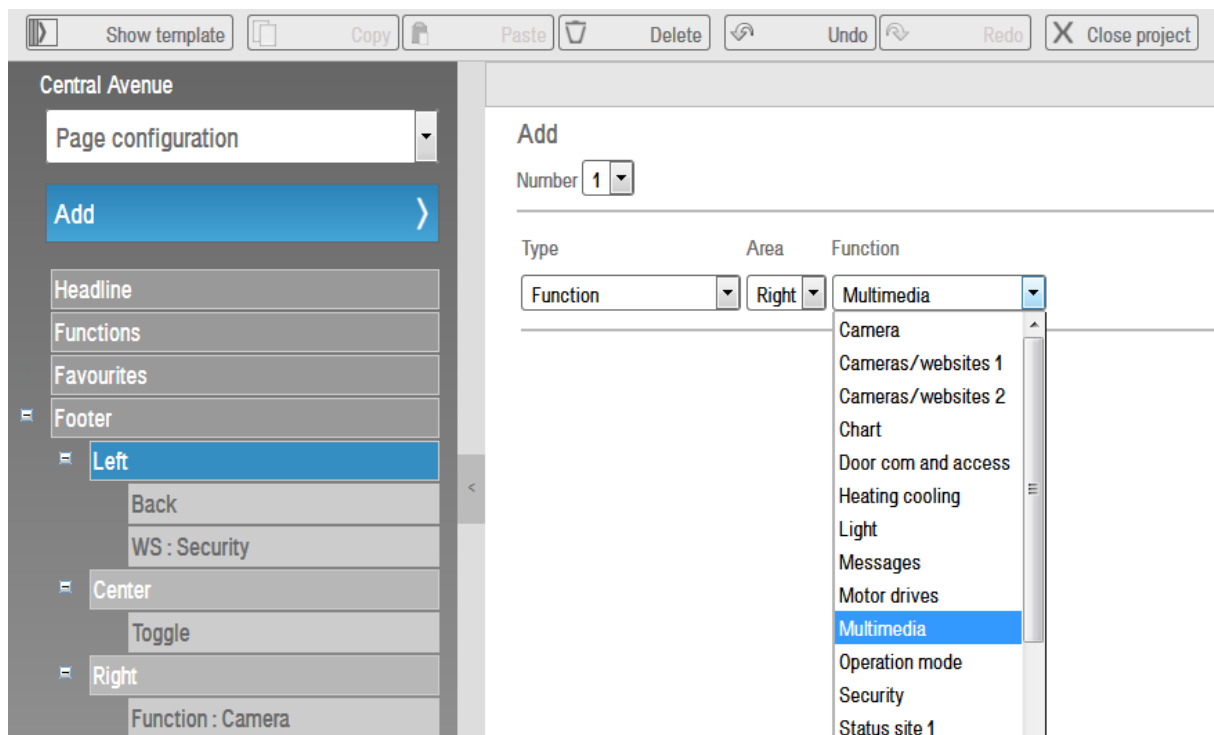
6.7.1 Headline



The content of the project-wide headline can be set here. The possibilities are **Back button**, **Date** and **Time**.

For the back button, another name can be entered, which is used when generating the project.

6.7.2 Footer

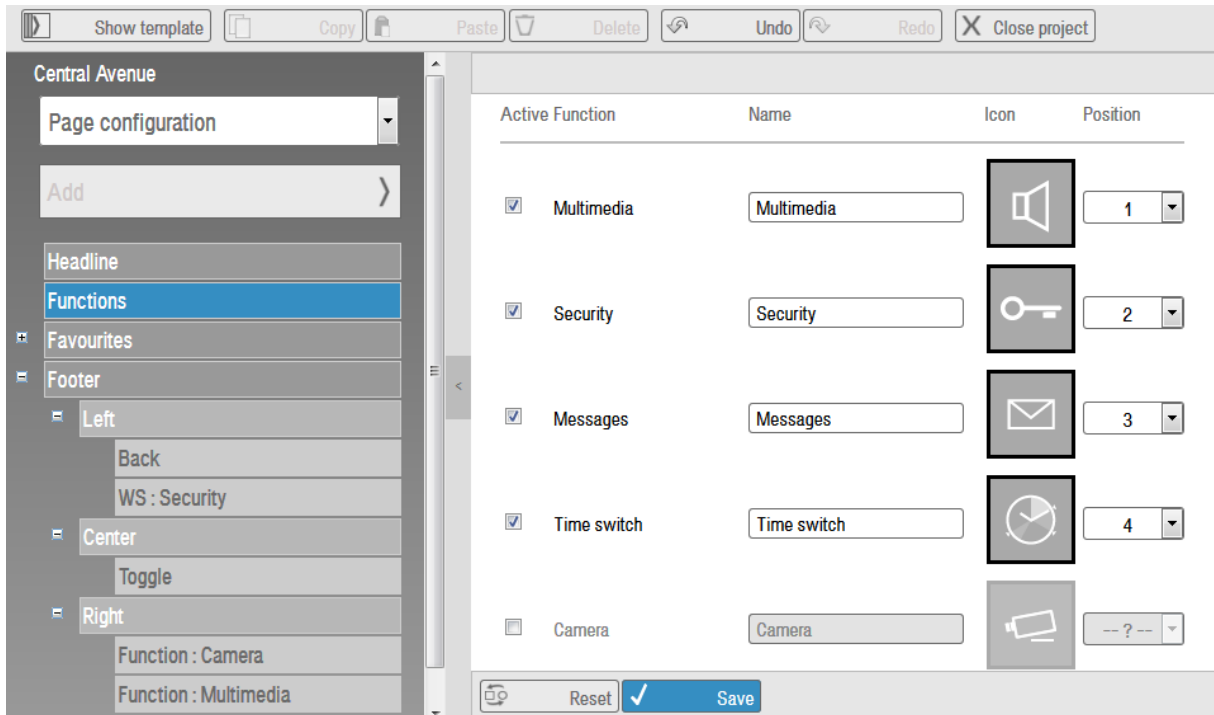


The content of the project-wide footer can be set here. For the middle part, only the toggle-button can be activated or deactivated. For left and right, there is a bigger selection of elements available.

Note: For the left and right there is no limit of elements but the number of elements who will be exported depends on the template layout. Templates with a higher resolution have more space in the footer than them with a lower, so they can include more elements.

In the resolution 440x800 there are some characteristics with the template. It uses only the left set quick links, therefore the home and toggle quick link is always displayed. The toggle quick link changes only between building structure and favourites – function will not appear at the moment. If a time switch and/or scene quick link is available, then it has display preference.

6.7.3 Functions



By setting the functions you can define a variety and an order from a given assortment of functions.

User sites

The user sites are not pre-defined function pages that are created empty after export, and be added to the function block on the homepage with the selected symbol.

6.7.4 Favourites

Central Avenue

Page configuration

Add

Headline

Functions

Favourites

Footer

Left

Center

Right

Add

Number 1

Name Type

Control 1 -- Choose --

-- Choose --

Switch

Dimmer

Blind

Slat

Basic setpoint

Temperature

Basic setpoint shift

Operation mode switch

Operation mode switch over

Binary Display

Analog display

Colour display

Consumption chart

Reset Save

In the favourites, controls can be chosen to be shown in a panel at the welcome page. There is a maximum of four elements for the panel.

Choose **Page settings** in the directory tree, then select **Favourites**, and after that click on **Add**. Now you can choose the number of favourites and change the standard names.

From the drop-down menu choose the control type. Click on **Save** to accept the changes. The new added favourites will be listed in the directory tree. **Reset** put the entries back to the level before treatment.

After that select the Favourites in the directory tree and make the desired settings:

Central Avenue

Page configuration

Add

Headline

Functions

Favourites

- Illumination
- Welcome
- Goodbye
- Temperature

Footer

Switch

Appearance

Name: Welcome Color: Standard Select

Display for 'On': On Color: Standard Select Icon:

Display for 'Off': Off Color: Standard Select Icon:

Font: Default

Settings

Switch type: On

Symbolic connection Group address

Category: Scenes Subcategory: Predefined Connection: -- Choose --

Utilize in timeswitch: -- Choose -- Channel: -- Choose --

Use in scene: -- Choose -- Channel: -- Choose --

Use in status site: Statusseite 1

Assignment

Position: 2

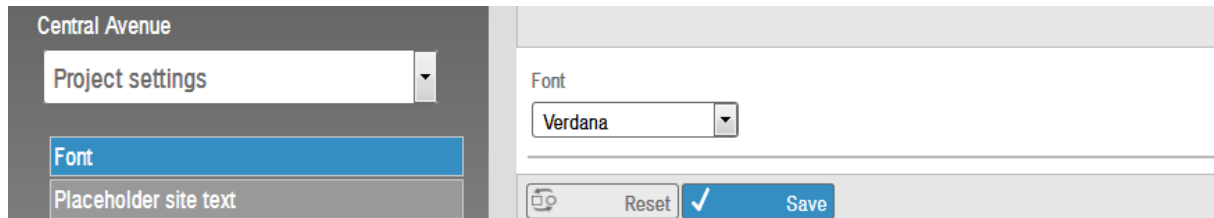
Reset Save

Note: It is as well possible to copy controls from the building structure and to paste them to the favourites.

6.8 Project Settings

At the [Project settings](#), project-wide settings can be changed.

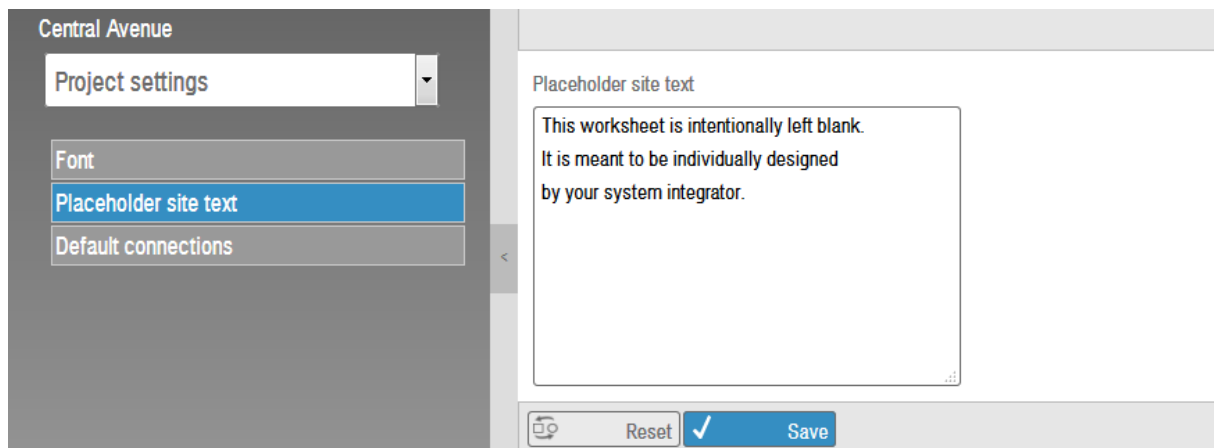
6.8.1 Font



Here, a project-wide font can be set. This setting applies to all elements with the font **Standard**. Any already existing elements with another font will not be changed.

Note: The individual expanding of the font list is not supported yet.

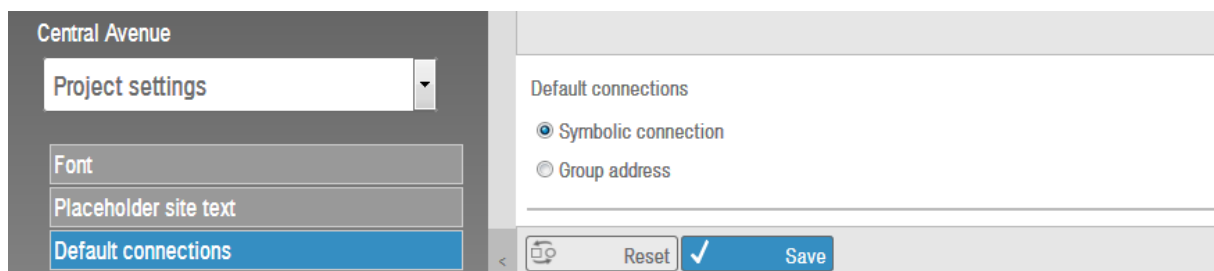
6.8.2 Placeholder



Sets the default text for the function pages, that will be generated for each activated function in the visualization project.

6.8.3 Default Connections

Under **Default connections** you can specify which method to use when creating control elements as standard.



6.9 Weather

In the area **Weather** you can choose from a number of requirements, which values are to be displayed in the **Function** Weather.

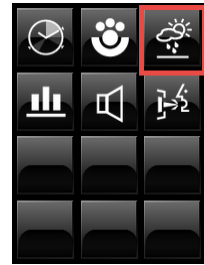
Select **Weather** from the drop-down menu in the directory tree and activate the desired values by clicking the box under **Value**, then save. In this example, there are: wind speed, wind direction, air pressure and temperature outside:

Value	Name	Icon	Position
<input checked="" type="checkbox"/>	Wind speed	Wind	1
<input type="checkbox"/>	Symbolic connection	Group address	
<input checked="" type="checkbox"/>	Wind direction	Wind from	2
<input type="checkbox"/>	Symbolic connection	Group address	
<input checked="" type="checkbox"/>	Air pressure	Air press.	3
<input type="checkbox"/>	Symbolic connection	Group address	
<input checked="" type="checkbox"/>	Temperature outside	Outside	4
<input type="checkbox"/>	Symbolic connection	Group address	

Choose **Page configuration** in the directory tree, select **Functions** and mark the check box in front of Weather. Then save:

Value	Name	Icon	Position
<input checked="" type="checkbox"/>	Time switch	Time switch	1
<input checked="" type="checkbox"/>	Store scene control	Store scene control	2
<input checked="" type="checkbox"/>	Weather	Weather	3

In the HTML view weather function is (when activated) displayed on the homepage of the exported visualization project in the function panel:

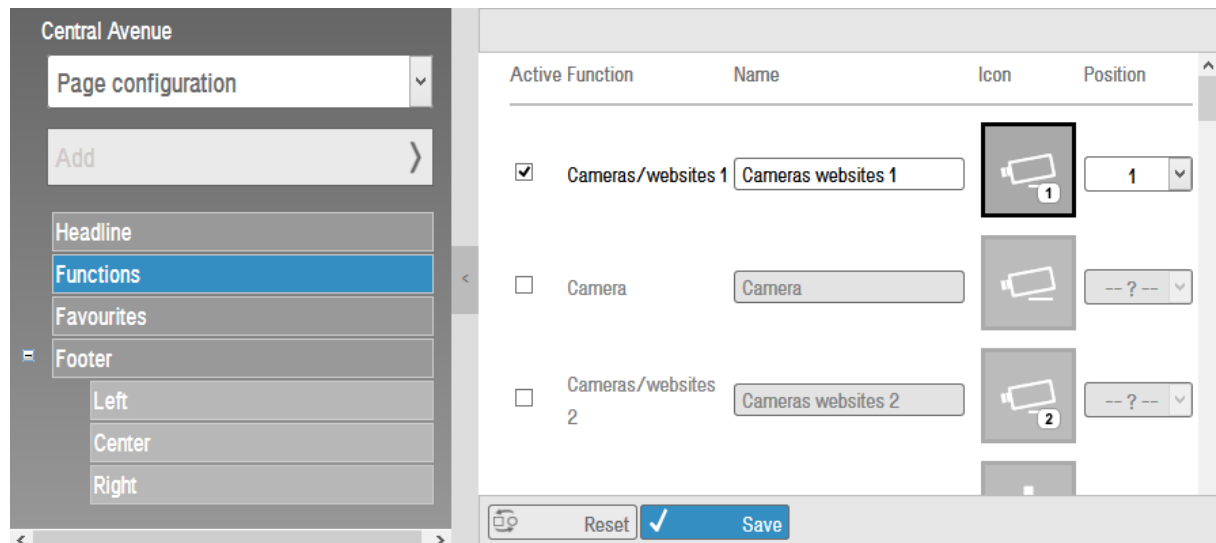


By clicking on the button weather in this function panel you get a view of the previously selected values, in this example: wind speed, wind direction, air pressure and temperature outside:



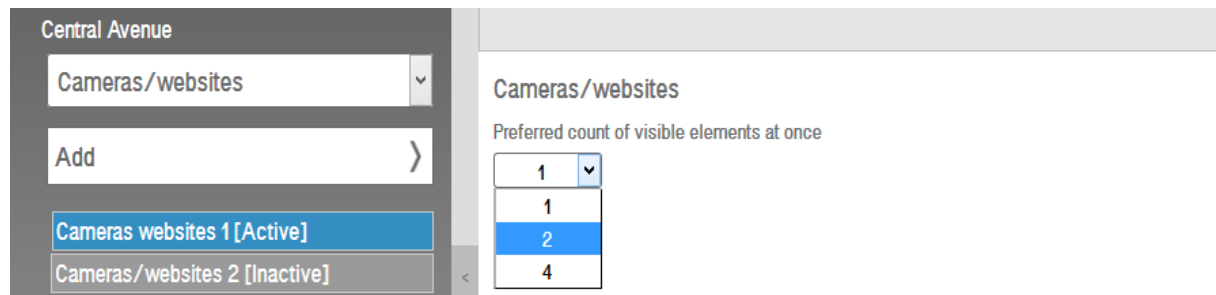
6.10 Camera / Websites

The Cameras/websites are special worksheets that can be activated on **Functions** in the **Page configuration**.



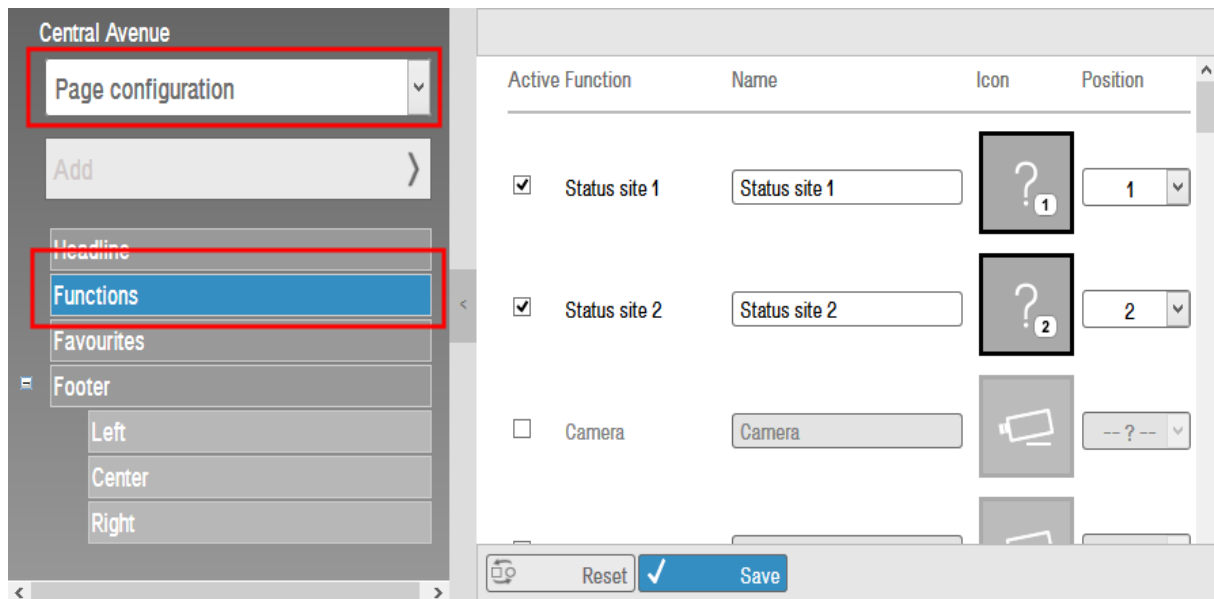
If a camera/website was enabled, the splitting of the page can be set in the corresponding drop-down menu **Cameras/websites**.

Here are subdivisions of 1, 2 or 4 elements to choose from.

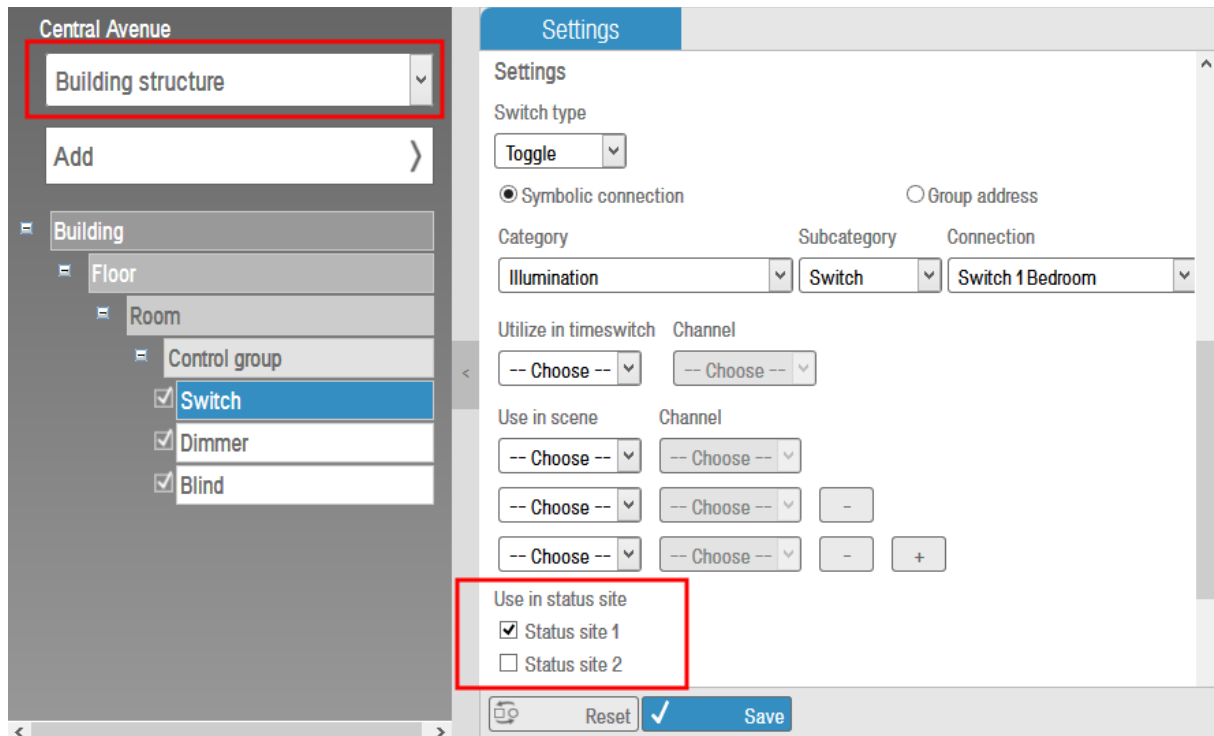


6.11 Status pages

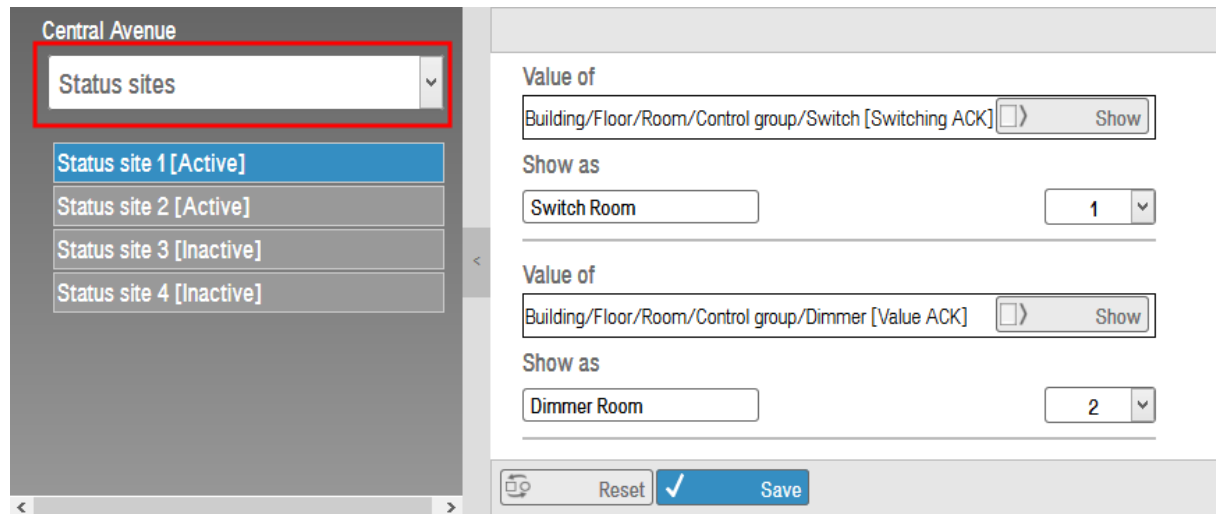
The status pages are special worksheets that can be activated on **Functions** in the **Page configuration**. It is possible to use up to 4 status pages.



To add a control element to one or more status pages, go to the **Building structure**. Within the settings of the control you can select the desired status page.



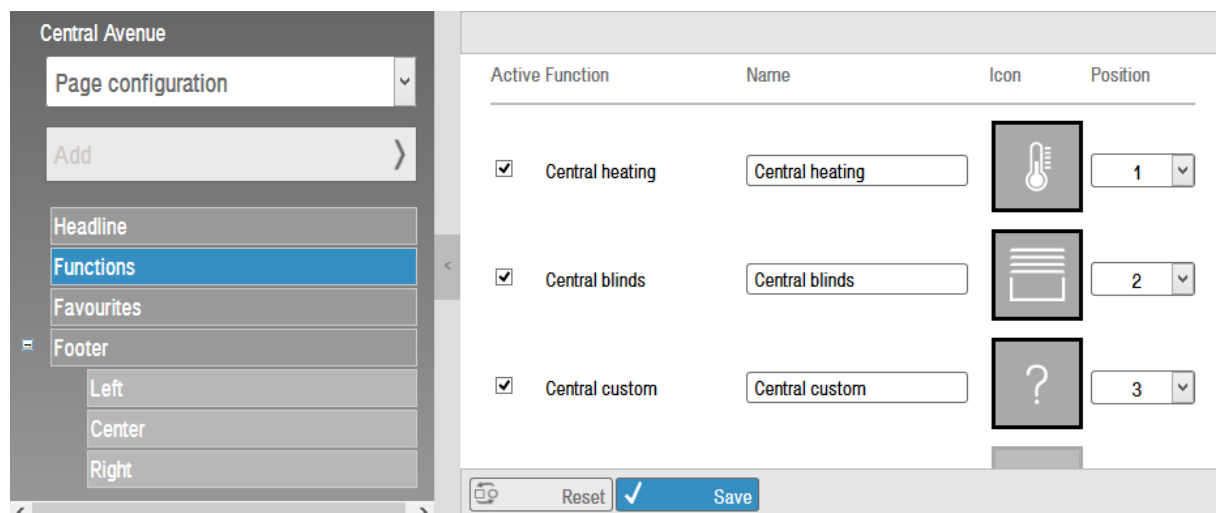
On the status pages registered control elements and their status are shown in the menu item **Status sites**:



To **remove** a connected element, click on the **Show**-Button at the end of a connection. The settings page of the element will be loaded and you can uncheck the box of the status page.

6.12 Central sites

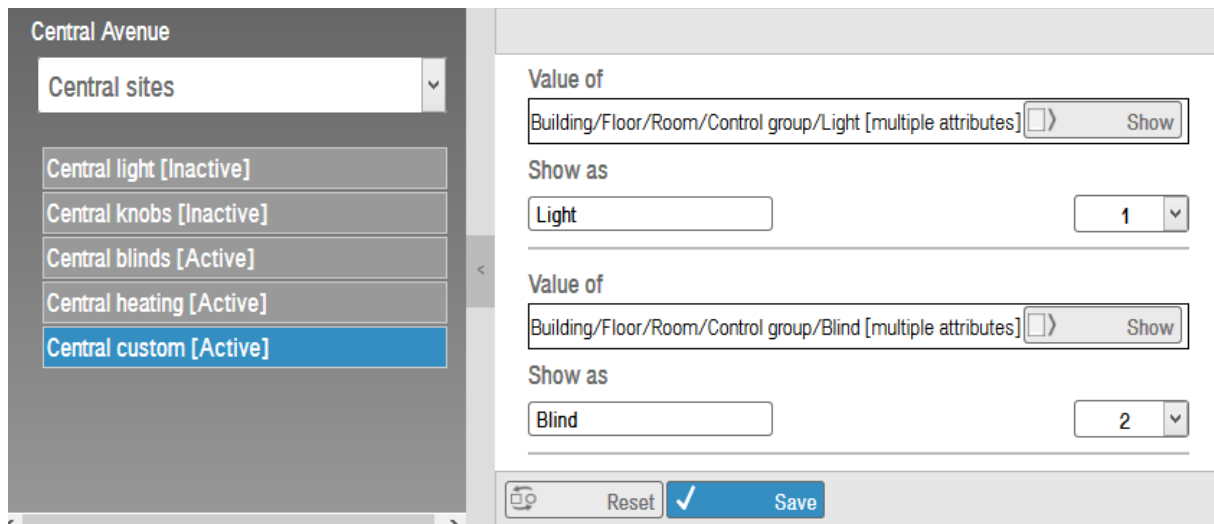
The central sites are special work sheets, that can be activated at **Functions** in the **Page configuration**.



On the central sites registered controls and their status are shown.

By selecting a central site in the **control details**, in the **Building structure**, the element gets assigned to the desired central page.

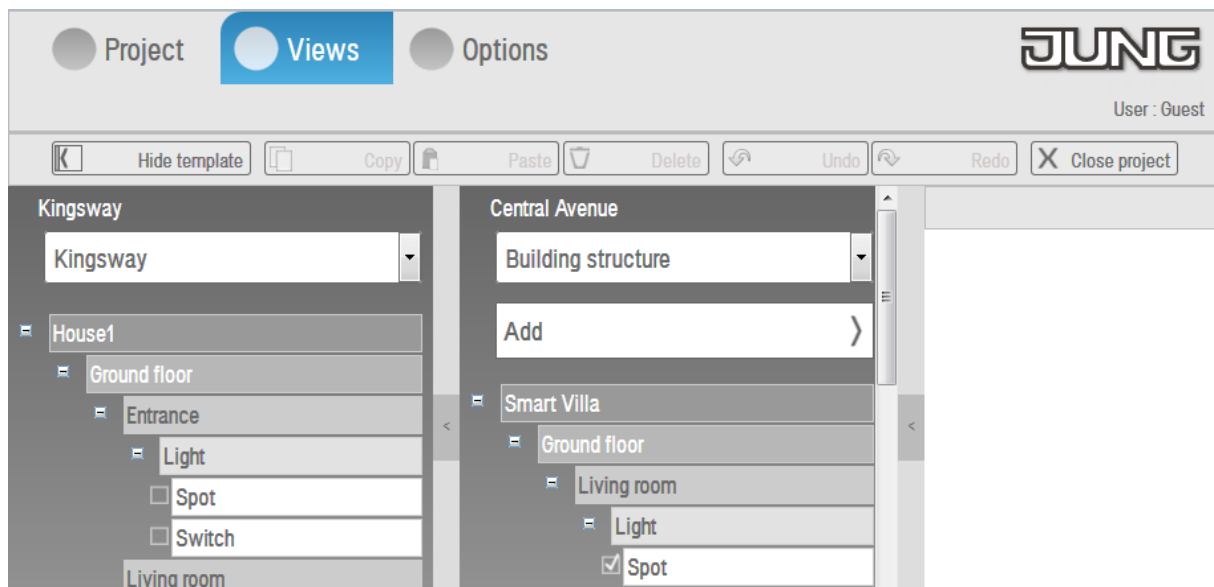
There are different central site categories: *Light, knobs, blinds, heating, custom.*



6.13 Templates

6.13.1 Show/Hide Template

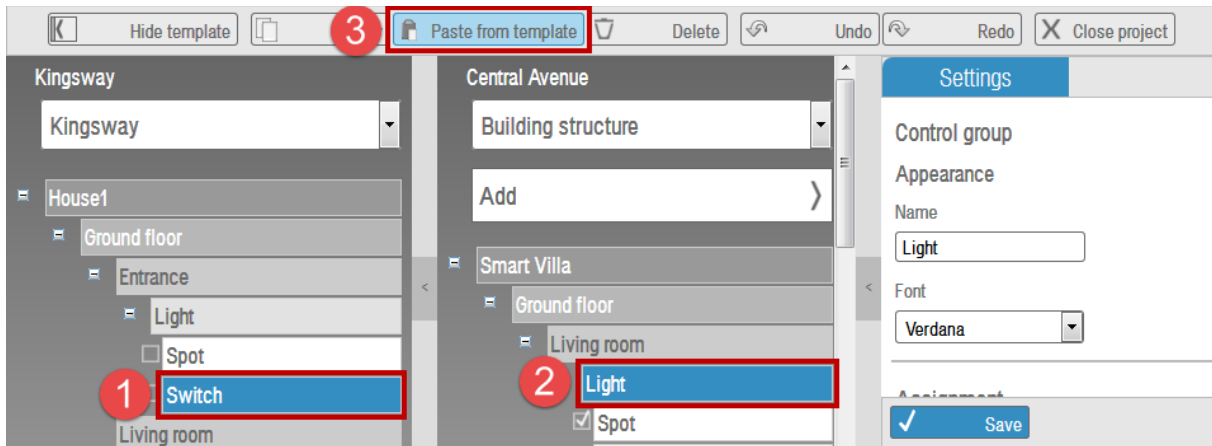
You can use templates for the project planning. This means that for Smart Assistant projects which follow a common pattern, you can save configured buildings, floors, rooms, element groups and elements as a project. This project can then serve as a template for other projects. The template window can be shown or hidden.



Select the desired project from the projects list to use it as a template for the current project.

6.13.2 Insert Elements from the Template

Select the desired element in the template, e.g. a control. Then select the parent element in the main project and click on the, now active, button **Paste from template**.

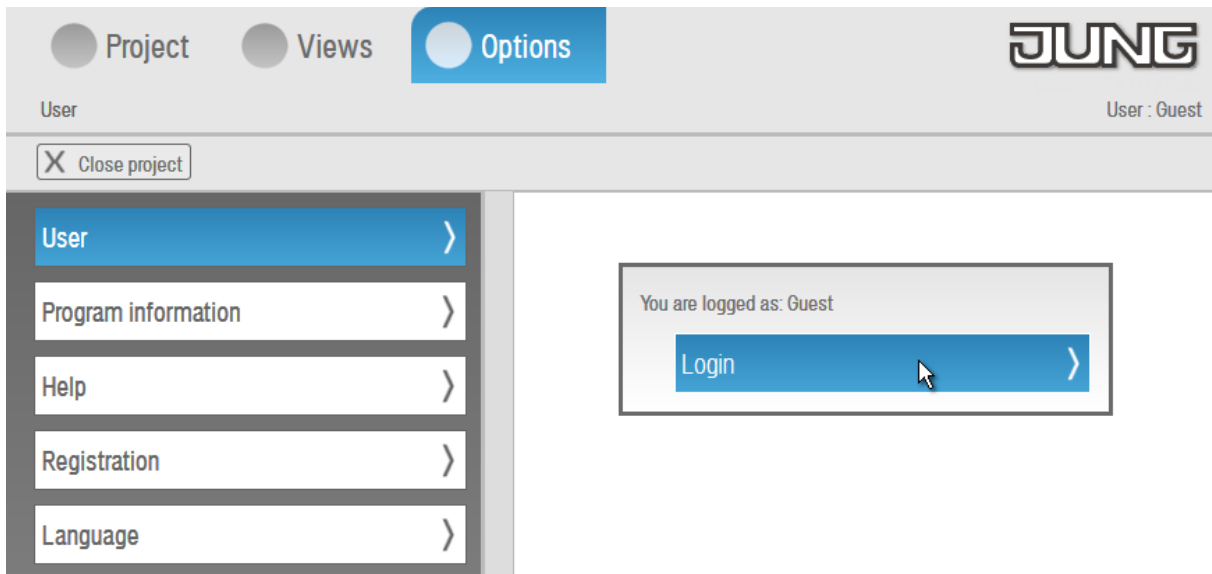


The element from the template is pasted at the designated place with all its settings. This can be redone at will.

7 Options

7.1 User Administration

If you start the Smart Assistant you are automatically logged in as **Guest**. To log in as an administrator, click on **User** under the category **Options**.



Enter the user name *admin* without password.

NOTE: For your own safety you have to set an administrator password. The newly assigned password should be stored carefully!

After registration as an administrator *user management* is added to the tab options. Here, users and passwords can be created,

edited or deleted. The *Administrator* only can change his password.

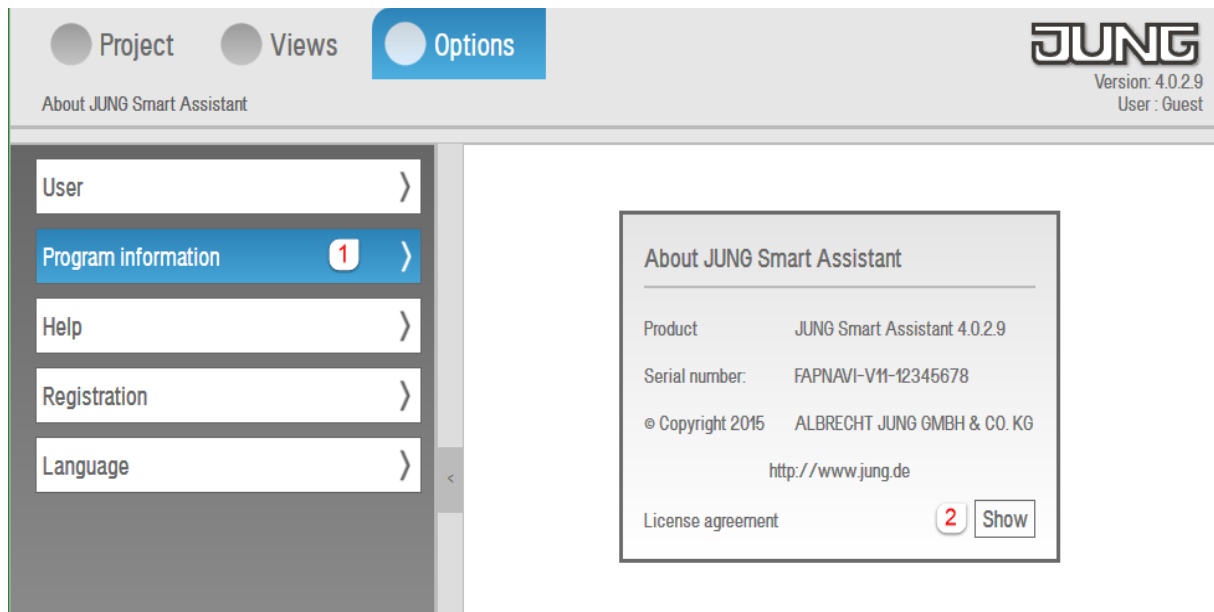
The user names *default*, *guest* and *admin* are already taken and can not be used again. If a user is logged out, the user *guest* will automatically logged in.

Note: It is not possible to create further users with the rights of the *Administrator*.

7.2 Program Information

Using this link you can find the version number, the serial number and the copyright.

Furthermore you can display the license agreement by first clicking on *Program information* (1) and then on *Show* (2).



7.3 Help

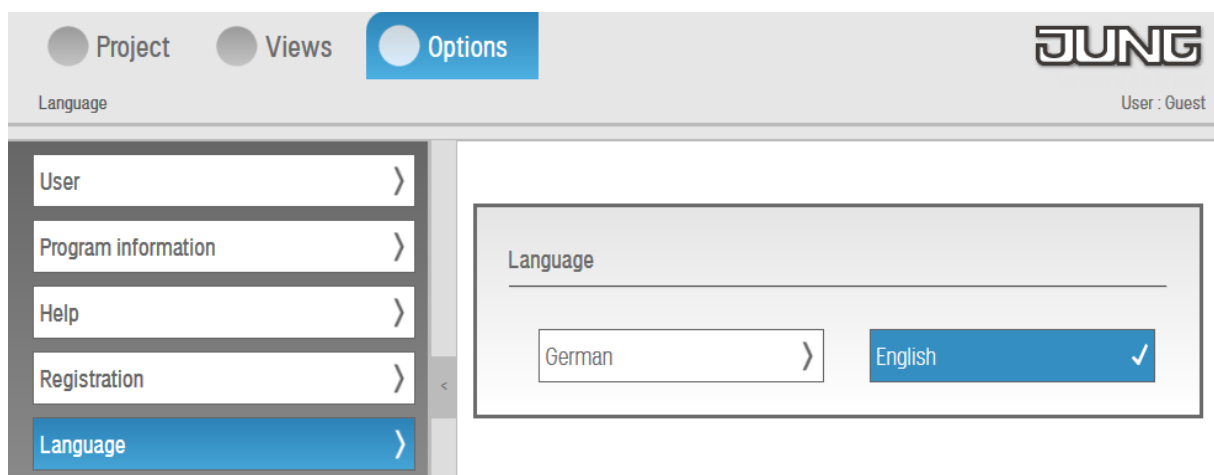
The button **Help** opens the program's help file in PDF format in a separate tab of the browser.

7.4 Registration

Click the button **Registration** to go to software activation. Then click the button **Activate** and continue as described in point **4.2 Registration/Software-Activation**.

7.5 Language

Clicking the button **Language** opens a selection where you can change the language to English or German.



Note: The language settings of the Visu Pro Smart Assistant complies at every start with the language of the used browser. Is the browser set to German, then the Smart Assistant will be loaded in German. Is the language English or any other language, then the Smart Assistant will be loaded in English.

At each new start, the browser loads the Visu Pro Smart Assistant in the language which is set in the browser. Even if the language was changed manually.